

Datasheet for ABIN5707104  
**anti-CD45RA antibody (PE)**



[Go to Product page](#)

1 Image

## Overview

Quantity:	100 tests
Target:	CD45RA
Reactivity:	Human
Host:	Mouse
Clonality:	Monoclonal
Conjugate:	This CD45RA antibody is conjugated to PE
Application:	Flow Cytometry (FACS)

## Product Details

Immunogen:	Purified lymphocytes from human lymph nodes
Clone:	F8-11-13
Isotype:	IgG1
Specificity:	Human CD45RA, Mr 220 kDa
Characteristics:	Mouse Anti-Human CD45RA-PE

## Target Details

Target:	CD45RA
Alternative Name:	CD45RA ( <a href="#">CD45RA Products</a> )

## Application Details

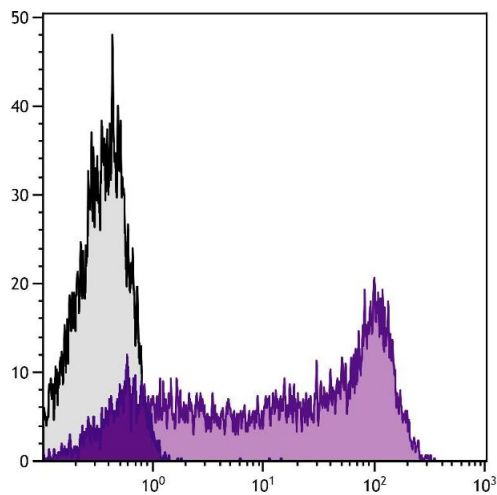
Application Notes:	<ul style="list-style-type: none"><li>• <b>Applications:</b> FC - Quality tested , IHC-FS - Reported in literature , IHC-PS - Reported in literature , IP - Reported in literature , Purification - Reported in literature</li><li>• <b>Working Dilutions:</b> Flow Cytometry Purified (UNLB) antibody 1 g/106 cells FITC, PE, SPRD, and AF700 conjugates 10 L/106 cells For flow cytometry, the suggested use of these reagents is in a final volume of 100 L</li></ul>
--------------------	--

Restrictions:	For Research Use only
---------------	-----------------------

## Handling

Buffer:	100 tests in 1.0 mL of PBS/Sodium azide and a stabilizing agent
Preservative:	Sodium azide
Precaution of Use:	This product contains Sodium azide: a POISONOUS AND HAZARDOUS SUBSTANCE which should be handled by trained staff only.
Storage:	4 °C
Storage Comment:	Store at 2-8°C

## Images



### Flow Cytometry

**Image 1.** Human peripheral blood lymphocytes were stained with Mouse Anti-Human CD45RA-AF700.