

Datasheet for ABIN570714

anti-CEP290 antibody (Internal Region)**3** Images[Go to Product page](#)

Overview

Quantity:	100 µg
Target:	CEP290
Binding Specificity:	Internal Region
Reactivity:	Human
Host:	Goat
Clonality:	Polyclonal
Conjugate:	This CEP290 antibody is un-conjugated
Application:	ELISA, Immunohistochemistry (IHC), Immunocytochemistry (ICC)

Product Details

Purpose:	CEP290
Immunogen:	Peptide with sequence C-RNSKHLKQQQYRAEN , from the internal region of the protein sequence according to NP_079390.3.
Sequence:	RNSKHLKQQQ YRAEN
Isotype:	IgG
Specificity:	Despite similarity of the immunizing peptide with the mouse protein, this antibody was demonstrated to weak for mouse Cep290.
Cross-Reactivity:	Human
Purification:	Purified from goat serum by ammonium sulphate precipitation followed by antigen affinity chromatography using the immunizing peptide.

Product Details

Grade: Verified

Target Details

Target: CEP290

Alternative Name: CEP290 ([CEP290 Products](#))

Background: CEP290, centrosomal protein 290 kDa, 3H11Ag, BBS14, FLJ13615, FLJ21979, JBTS5, JBTS6, KIAA0373, LCA10, MKS4, NPHP6, SLSN6, rd16, CTCL tumor antigen se2-2, monoclonal antibody 3H11 antigen, nephrocytin-6, prostate cancer antigen T21

Gene ID: 80184, 216274

NCBI Accession: [NP_079390](#)

Pathways: [cAMP Metabolic Process](#), [M Phase](#)

Application Details

Application Notes: Immunohistochemistry: Paraffin embedded Human Prostate. Recommended concentration: 5-7 µg/mL.
Peptide ELISA: antibody detection limit dilution 1:128000.

Comment: **Immunocytochemistry:** Formaldehyde-fixed cell lines derived from Prostate Cancer and from Breast Cancer show typical centrosomal staining. Recommended concentration: 2-3ug/ml.

Restrictions: For Research Use only

Handling

Format: Liquid

Concentration: 0.5 mg/mL

Buffer: Supplied at 0.5 mg/mL in Tris saline, 0.02 % sodium azide, pH 7.3 with 0.5 % bovine serum albumin.

Preservative: Sodium azide

Precaution of Use: This product contains Sodium azide: a POISONOUS AND HAZARDOUS SUBSTANCE which should be handled by trained staff only.

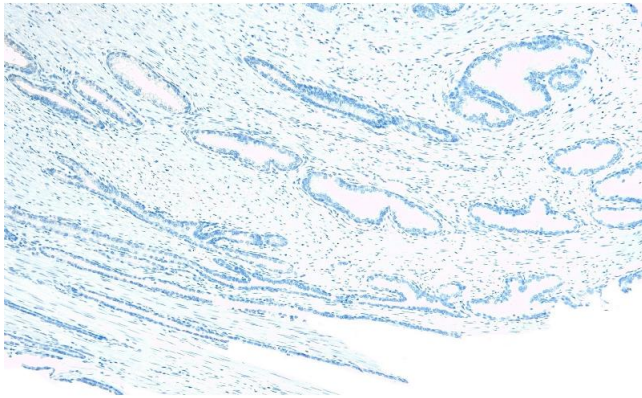
Handling Advice: Minimize freezing and thawing.

Storage: -20 °C

Handling

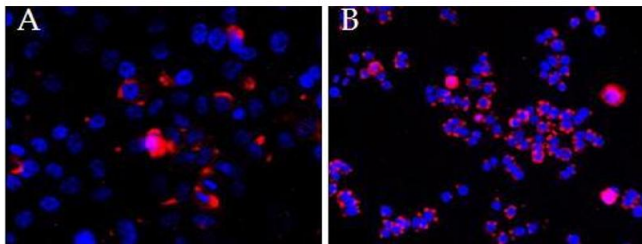
Storage Comment: Aliquot and store at -20°C, with minimal freeze/thawing. A working aliquot may be refrigerated at 4°C for a few weeks and still remain viable.

Images



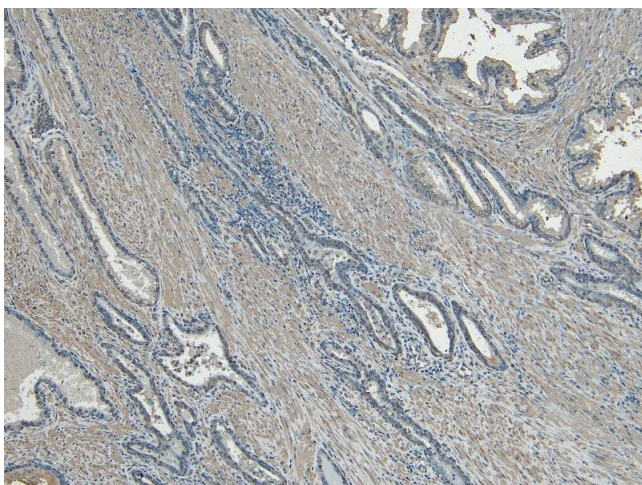
Immunohistochemistry

Image 1. ABIN570714 Negative Control showing staining of paraffin embedded Human Prostate, with no primary antibody.



Immunofluorescence

Image 2. ABIN570714 (2.5ug/ml overnight staining of cell lines OPCT-1 (A) and MDA468 (fB) with Alexa Fluor 568 (red) and nuclear counter staining with DAPI (blue). Data kindly provided by Dr S, McArdle, and obtained by Sumanjeet Malhi, John van Geest Research Centre



Immunohistochemistry

Image 3. ABIN570714 (5 µg/mL) staining of paraffin embedded Human Prostate. Heat induced antigen retrieval with citrate buffer pH 6, HRP-staining.