



[Go to Product page](#)

Datasheet for ABIN5707174

anti-Collagen Type I antibody (Biotin)

1 Image

Overview

Quantity:	0.1 mg
Target:	Collagen Type I (COL1)
Reactivity:	Human
Host:	Mouse
Clonality:	Monoclonal
Conjugate:	This Collagen Type I antibody is conjugated to Biotin
Application:	ELISA, FLISA

Product Details

Immunogen:	Native human type I collagen
Clone:	4F6
Isotype:	IgG2b
Specificity:	Human type I collagen
Characteristics:	Mouse Anti-Human Type I Collagen-BIOT

Target Details

Target:	Collagen Type I (COL1)
Alternative Name:	Type I Collagen (COL1 Products)

Application Details

Application Notes:

- **Applications:** ELISA - Quality tested FLISA - Quality tested IHC-FS - Reported in literature
- **Working Dilutions:** ELISA HRP conjugate 1:1,000 - 1:4,000 BIOT conjugate 1:5,000 - 1:20,000
FLISA FITC conjugate 1:200 - 1:800 Immunohistochemistry Purified (UNLB) antibody \leq 2 g/mL

Restrictions: For Research Use only

Handling

Concentration: 0.5 mg/mL

Buffer: 0.1 mg in 0.2 mL PBS/Sodium azide

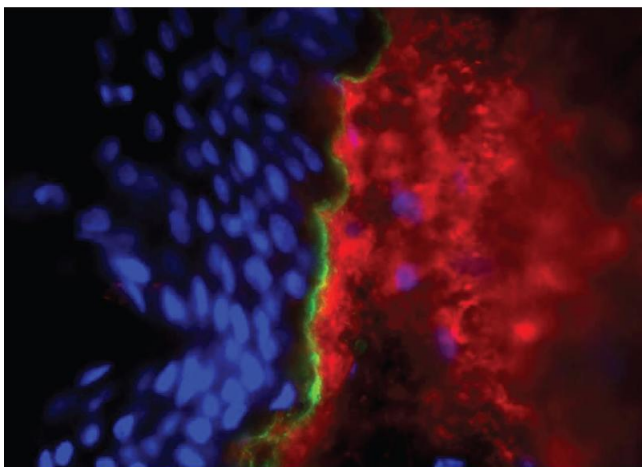
Preservative: Sodium azide

Precaution of Use: This product contains Sodium azide: a POISONOUS AND HAZARDOUS SUBSTANCE which should be handled by trained staff only.

Storage: 4 °C

Storage Comment: Store at 2-8°C

Images



Immunofluorescence

Image 1. Frozen human skin tissue section was stained with Mouse Anti-Type I Collagen-UNLB, and DAPI.