

Datasheet for ABIN5707176

anti-Collagen Type I antibody (HRP)**1** Image[Go to Product page](#)

Overview

Quantity:	1 mL
Target:	Collagen Type I (COL1)
Reactivity:	Human
Host:	Mouse
Clonality:	Monoclonal
Conjugate:	This Collagen Type I antibody is conjugated to HRP
Application:	ELISA, FLISA

Product Details

Immunogen:	Native human type I collagen
Clone:	4F6
Isotype:	IgG2b
Specificity:	Human type I collagen
Characteristics:	Mouse Anti-Human Type I Collagen-HRP

Target Details

Target:	Collagen Type I (COL1)
Alternative Name:	Type I Collagen (COL1 Products)

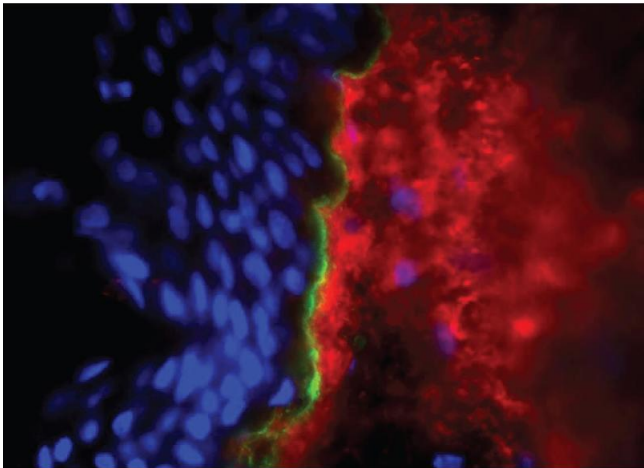
Application Details

Application Notes:	<ul style="list-style-type: none">• Applications: ELISA - Quality tested FLISA - Quality tested IHC-FS - Reported in literature• Working Dilutions: ELISA HRP conjugate 1:1,000 - 1:4,000 BIOT conjugate 1:5,000 - 1:20,000 FLISA FITC conjugate 1:200 - 1:800 Immunohistochemistry Purified (UNLB) antibody \leq 2 g/mL
Restrictions:	For Research Use only

Handling

Buffer:	1.0 mL of stock solution in 50 % glycerol/50 % PBS, pH 7.4. No preservative added
Preservative:	Without preservative
Storage:	4 °C
Storage Comment:	Store at 2-8°C or long-term at -20C

Images



Immunofluorescence

Image 1. Frozen human skin tissue section was stained with Mouse Anti-Type I Collagen-UNLB, and DAPI.