

Datasheet for ABIN5707187
anti-H2-D1 antibody (APC)[Go to Product page](#)

1 Image

Overview

Quantity:	0.1 mg
Target:	H2-D1
Reactivity:	Mouse
Host:	Mouse
Clonality:	Monoclonal
Conjugate:	This H2-D1 antibody is conjugated to APC
Application:	Flow Cytometry (FACS)

Product Details

Immunogen:	C3H.SW mouse splenocytes
Clone:	28-14-8
Isotype:	IgG2a
Specificity:	Mouse H-2Db
Characteristics:	Mouse Anti-Mouse H-2Db-APC

Target Details

Target:	H2-D1
Alternative Name:	H-2Db (H2-D1 Products)
Pathways:	Regulation of Leukocyte Mediated Immunity , Positive Regulation of Immune Effector Process

Application Details

Application Notes:

- **Applications:** FC - Quality tested , IHC-FS - Reported in literature , IP - Reported in literature , Block - Reported in literature , CMCD - Reported in literature
- **Working Dilutions:** Flow Cytometry Purified (UNLB) antibody 1 g/106 cells FITC, BIOT, and AF488 conjugates 1 g/106 cells PE conjugate 0.5 g/106 cells APC conjugate 0.1 g/106 cells
For flow cytometry, the suggested use of these reagents is in a final volume of 100 L

Restrictions:

For Research Use only

Handling

Concentration:

0.1 mg/mL

Buffer:

0.1 mg in 1.0 mL of PBS/Sodium azide and a stabilizing agent

Preservative:

Sodium azide

Precaution of Use:

This product contains Sodium azide: a POISONOUS AND HAZARDOUS SUBSTANCE which should be handled by trained staff only.

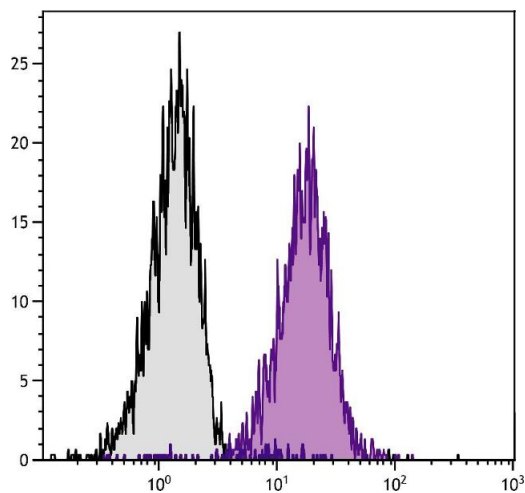
Storage:

4 °C, -20 °C

Storage Comment:

Store at 2-8°C

Images



Flow Cytometry

Image 1. C57BL/6 mouse splenocytes were stained with Mouse Anti-Mouse H-2Db-PE.