



Datasheet for ABIN570720

anti-CTAG1B antibody (Internal Region)



[Go to Product page](#)

2 Images

1 Publication

Overview

Quantity:	100 µg
Target:	CTAG1B
Binding Specificity:	Internal Region
Reactivity:	Human
Host:	Goat
Clonality:	Polyclonal
Conjugate:	This CTAG1B antibody is un-conjugated
Application:	Immunofluorescence (IF), ELISA, Flow Cytometry (FACS), Microarray (MA)

Product Details

Purpose:	NY-ESO-1
Immunogen:	Peptide with sequence C-AELARRSLAQDAP, from the internal region of the protein sequence according to NP_001318.1.
Sequence:	AELARRSLAQ DAP
Isotype:	IgG
Cross-Reactivity:	Human
Purification:	Purified from goat serum by ammonium sulphate precipitation followed by antigen affinity chromatography using the immunizing peptide.
Grade:	Verified

Target Details

Target:	CTAG1B
Alternative Name:	CTAG1B (CTAG1B Products)
Background:	CTAG1B, cancer/testis antigen 1B, CTAG, CTAG1, ESO1, LAGE-2, LAGE2B, NY-ESO-1, New York esophageal squamous cell carcinoma 1, cancer antigen 3
Gene ID:	1485
NCBI Accession:	NP_001318

Application Details

Application Notes:	Peptide ELISA: antibody detection limit dilution 1:16000.
Comment:	Immunofluorescence: Strong expression of the protein seen in the cytoplasm of A549 cells. Recommended concentration: 10µg/ml. Flow Cytometry: Flow cytometric analysis of A549 cells. Recommended concentration: 10ug/ml.<
Restrictions:	For Research Use only

Handling

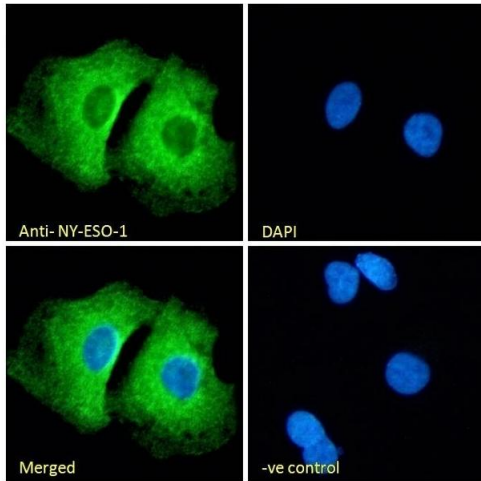
Format:	Liquid
Concentration:	0.5 mg/mL
Buffer:	Supplied at 0.5 mg/mL in Tris saline, 0.02 % sodium azide, pH 7.3 with 0.5 % bovine serum albumin.
Preservative:	Sodium azide
Precaution of Use:	This product contains Sodium azide: a POISONOUS AND HAZARDOUS SUBSTANCE which should be handled by trained staff only.
Handling Advice:	Minimize freezing and thawing.
Storage:	-20 °C
Storage Comment:	Aliquot and store at -20°C, with minimal freeze/thawing. A working aliquot may be refrigerated at 4°C for a few weeks and still remain viable.

Publications

Product cited in:	Shan, Lou, Xiao, Zhang, Sun, Gao, Cheng, Wu, Xu, Liu: "A cancer/testis antigen microarray to
-------------------	--

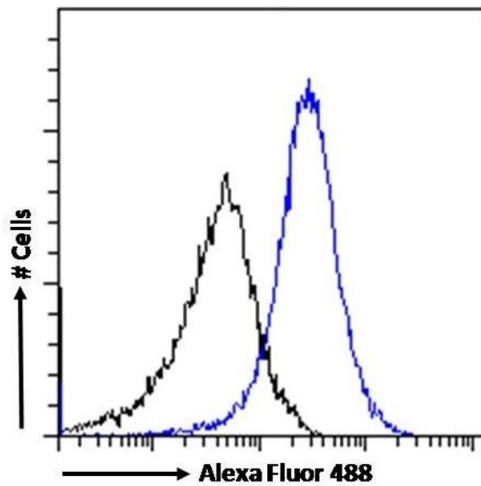
screen autoantibody biomarkers of non-small cell lung cancer." in: **Cancer letters**, Vol. 328, Issue 1, pp. 160-7, (2012) ([PubMed](#)).

Images



Immunofluorescence

Image 1. (ABIN570720) Immunofluorescence analysis of paraformaldehyde fixed A549 cells, permeabilized with 0.15 % Triton. Primary incubation 1hr (10 µg/mL) followed by Alexa Fluor 488 secondary antibody (2 µg/mL), showing cytoplasmic staining. The nuclear stain is DAPI (b



Flow Cytometry

Image 2. (ABIN570720) Flow cytometric analysis of paraformaldehyde fixed A549 cells (blue line), permeabilized with 0.5 % Triton. Primary incubation 1hr (10 µg/mL) followed by Alexa Fluor 488 secondary antibody (1 µg/mL). IgG control: Unimmunized goat IgG (black line) fol