



[Go to Product page](#)

Datasheet for ABIN5707223
anti-Ig antibody (PE)

1 Image

Overview

Quantity:	0.1 mg
Target:	Ig
Reactivity:	Rabbit
Host:	Rat
Clonality:	Monoclonal
Conjugate:	This Ig antibody is conjugated to PE
Application:	ELISA, Flow Cytometry (FACS), FLISA

Product Details

Immunogen:	Rabbit IgG and IgM
Clone:	SB87a
Isotype:	IgG2a
Specificity:	Rabbit IgG, IgM, and IgA Minimal reactivity to human, mouse, rat, hamster, goat, sheep, porcine, canine, and rhesus IgG and guinea pig serum
Characteristics:	Rat Anti-Rabbit Ig-PE

Target Details

Target:	Ig
Abstract:	Ig Products

Application Details

Application Notes:

- **Applications:** ELISA - Quality tested , FLISA - Quality tested FC - Quality tested
- **Working Dilutions:** ELISA HRP conjugate 1:4,000 - 1:8,000 BIOT conjugate 1:5,000 - 1:10,000
FLISA PE conjugate 1 g/mL Flow Cytometry BIOT conjugate 1 g/10⁶ cells PE and SPRD conjugates 0.1 g/10⁶ cells For flow cytometry, the suggested use of these reagents is in a final volume of 100 l

Restrictions: For Research Use only

Handling

Concentration: 0.1 mg/mL

Buffer: 0.1 mg in 1.0 mL of PBS/Sodium azide and a stabilizing agent

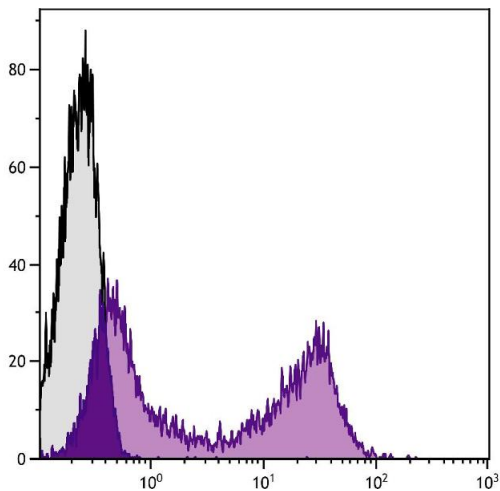
Preservative: Sodium azide

Precaution of Use: This product contains Sodium azide: a POISONOUS AND HAZARDOUS SUBSTANCE which should be handled by trained staff only.

Storage: 4 °C, -20 °C

Storage Comment: Store at 2-8°C

Images



Flow Cytometry

Image 1. Rabbit peripheral blood lymphocytes were stained with Rat Anti-Rabbit Ig-BIOT.