

Datasheet for ABIN5707237

Donkey anti-Mouse IgG (Heavy & Light Chain) Antibody (HRP) - Preadsorbed



[Go to Product page](#)

1 Image

Overview

Quantity: 1 mL

Target: IgG

Binding Specificity: Heavy & Light Chain

Reactivity: Mouse

Host: Donkey

Clonality: Polyclonal

Conjugate: HRP

Application: ELISA, FLISA

Product Details

Isotype: IgG

Specificity: Reacts with the heavy and light chains of mouse IgG and the light chains of mouse IgM and IgA

Characteristics: Donkey Anti-Mouse IgG(H+L), Multi-Species SP ads-HRP

Purification: **Purification Method:** Affinity chromatography on mouse IgG covalently linked to agarose.
Preadsorption: Multi-Species SP adsorbed

Target Details

Target: IgG

Abstract: [IgG Products](#)

Target Type: Antibody

Application Details

Application Notes:	<ul style="list-style-type: none">• Applications: Quality tested applications include - ELISA FLISA Other applications include - ICC• Working Dilutions: ELISA Purified (UNLB) antibody \leq 1 g/mL AP conjugate 1:1,000 - 1:4,000 HRP conjugate 1:4,000 - 1:8,000 BIOT conjugate 1:5,000 - 1:20,000 FLISA FITC and AF488 conjugates 1:100 - 1:400 AF555 conjugate 1:100 - 1:200 AF647 conjugate \leq 1 g/mL
--------------------	---

Restrictions:	For Research Use only
---------------	-----------------------

Handling

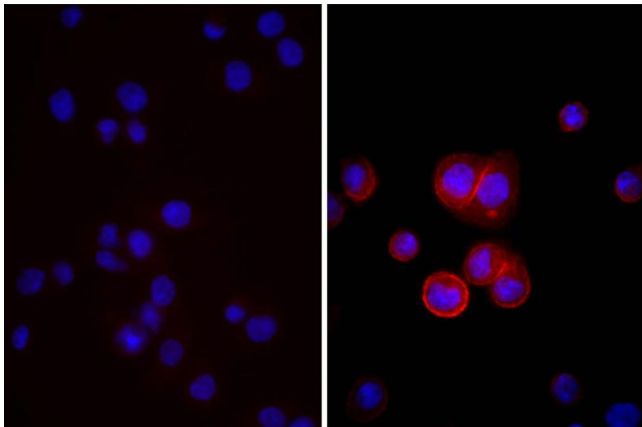
Buffer:	1.0 mL of stock solution in 50 % glycerol/50 % PBS, pH 7.4. No preservative added
---------	---

Preservative:	Without preservative
---------------	----------------------

Storage:	4 °C,-20 °C
----------	-------------

Storage Comment:	Store at 2-8°C or long-term at -20°C
------------------	--------------------------------------

Images



Immunofluorescence

Image 1. Human pancreatic carcinoma cell line MIA PaCa-2 was stained with Mouse Anti-Human CD44-UNLB, and DAPI.