



[Go to Product page](#)

Datasheet for ABIN570725

## anti-Myonase antibody (Internal Region)

### 1 Image

#### Overview

|                      |  |
|----------------------|--|
| Quantity:            | 100 µg                                 |
| Target:              | Myonase (MCPT4)                        |
| Binding Specificity: | Internal Region                        |
| Reactivity:          | Mouse                                  |
| Host:                | Goat                                   |
| Clonality:           | Polyclonal                             |
| Conjugate:           | This Myonase antibody is un-conjugated |
| Application:         | ELISA, Immunohistochemistry (IHC)      |

#### Product Details

|                   |   |
|-------------------|---|
| Purpose:          | Mcpt4 / Myonase (mouse)   |
| Immunogen:        | Peptide with sequence C-KLQKKAKETPSVN, from the internal region of the protein sequence according to NP_034909.2.                     |
| Sequence:         | KLQKKAKETP SVN  |
| Isotype:          | IgG   |
| Cross-Reactivity: | Mouse   |
| Purification:     | Purified from goat serum by ammonium sulphate precipitation followed by antigen affinity chromatography using the immunizing peptide. |
| Grade:            | Verified  |

## Target Details

---

|                   |   |
|-------------------|---|
| Target:           | Myonase (MCPT4)   |
| Alternative Name: | Mcpt4 ( <a href="#">MCPT4 Products</a> )                              |
| Background:       | Mcpt4, mast cell protease 4, MMCP-4, MMCP-4A, MMCP-4B, Mcp-4, myonase |
| Gene ID:          | 17227   |
| NCBI Accession:   | <a href="#">NP_034909</a>   |

## Application Details

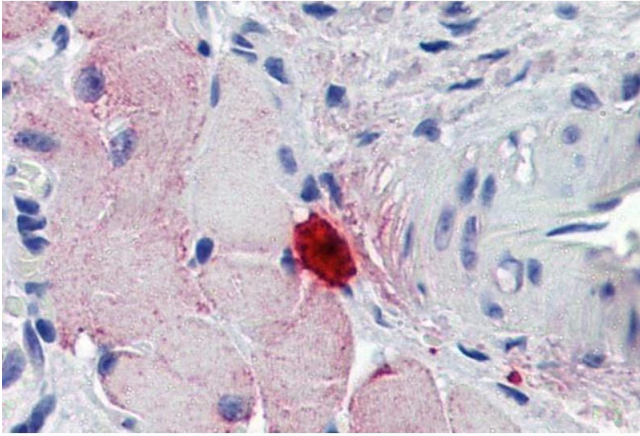
---

|                    |  |
|--------------------|--|
| Application Notes: | Immunohistochemistry: Paraffin embedded Mouse Intestine. Recommended concentration: 6-8 µg/mL.<br>Peptide ELISA: antibody detection limit dilution 1:2000. |
| Restrictions:      | For Research Use only  |

## Handling

---

|                    |  |
|--------------------|--|
| Format:            | Liquid   |
| Concentration:     | 0.5 mg/mL  |
| Buffer:            | Supplied at 0.5 mg/mL in Tris saline, 0.02 % sodium azide, pH 7.3 with 0.5 % bovine serum albumin.   |
| Preservative:      | Sodium azide   |
| Precaution of Use: | This product contains Sodium azide: a POISONOUS AND HAZARDOUS SUBSTANCE which should be handled by trained staff only.                         |
| Handling Advice:   | Minimize freezing and thawing.   |
| Storage:           | -20 °C   |
| Storage Comment:   | Aliquot and store at -20°C, with minimal freeze/thawing. A working aliquot may be refrigerated at 4°C for a few weeks and still remain viable. |



### Immunohistochemistry

**Image 1.** ABIN570725 (3.75µg/ml) staining of paraffin embedded Mouse Skeletal Muscle. Steamed antigen retrieval with citrate buffer pH 6, AP-staining.