

Datasheet for ABIN5707371

Goat anti-Mouse IgG2b Antibody (Alkaline Phosphatase (AP))[Go to Product page](#)**1** Image

Overview

Quantity:	1 mL
Target:	IgG2b
Reactivity:	Mouse
Host:	Goat
Clonality:	Polyclonal
Conjugate:	Alkaline Phosphatase (AP)
Application:	ELISA, FLISA

Product Details

Isotype:	IgG
Specificity:	Reacts with the heavy chain of mouse IgG2b
Characteristics:	Goat Anti-Mouse IgG2b-AP
Purification:	Purification Method: Affinity chromatography on mouse IgG2b covalently linked to agarose.

Target Details

Target:	IgG2b
Abstract:	IgG2b Products
Target Type:	Antibody

Application Details

- Application Notes:
- **Applications:** Quality tested applications include - ELISA , FLISA
 - **Working Dilutions:** ELISA Purified (UNLB) antibody 1 g/mL AP conjugate 1:2,000 - 1:4,000 HRP conjugate 1:4,000 - 1:8,000 BIOT conjugate 1:5,000 - 1:20,000 FLISA FITC, AF488, and AF555 conjugates 1:100 - 1:400 AF647 conjugate 1 g/mL

Restrictions: For Research Use only

Handling

Concentration: 1.0 mg/mL

Buffer: 1.0 mg in 1.0 mL of PBS/Sodium azide

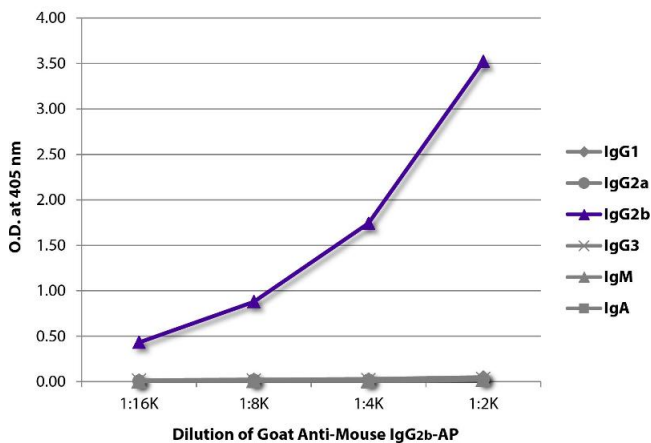
Preservative: Sodium azide

Precaution of Use: This product contains Sodium azide: a POISONOUS AND HAZARDOUS SUBSTANCE which should be handled by trained staff only.

Storage: 4 °C,-20 °C

Storage Comment: Store at 2-8°C

Images



ELISA

Image 1. ELISA plate was coated with purified mouse IgG1, IgG2a, IgG2b, IgG3, IgM, and IgA. Immunoglobulins were detected with serially diluted Goat Anti-Mouse IgG2b-AP.