

Datasheet for ABIN5707375
Goat anti-Mouse IgG2b Antibody



[Go to Product page](#)

1 Image

Overview

Quantity:	1 mg
Target:	IgG2b
Reactivity:	Mouse
Host:	Goat
Clonality:	Polyclonal
Application:	ELISA, FLISA

Product Details

Isotype:	IgG
Specificity:	Reacts with the heavy chain of mouse IgG2b
Characteristics:	Goat Anti-Mouse IgG2b-UNLB
Purification:	Purification Method: Affinity chromatography on mouse IgG2b covalently linked to agarose.

Target Details

Target:	IgG2b
Abstract:	IgG2b Products
Target Type:	Antibody

Application Details

Application Notes: **Applications:** Quality tested applications include - ELISA , FLISA

Application Details

- **Working Dilutions:** ELISA Purified (UNLB) antibody 1 g/mL AP conjugate 1:2,000 - 1:4,000 HRP conjugate 1:4,000 - 1:8,000 BIOT conjugate 1:5,000 - 1:20,000 FLISA FITC, AF488, and AF555 conjugates 1:100 - 1:400 AF647 conjugate 1 g/mL

Restrictions: For Research Use only

Handling

Concentration: 1.0 mg/mL

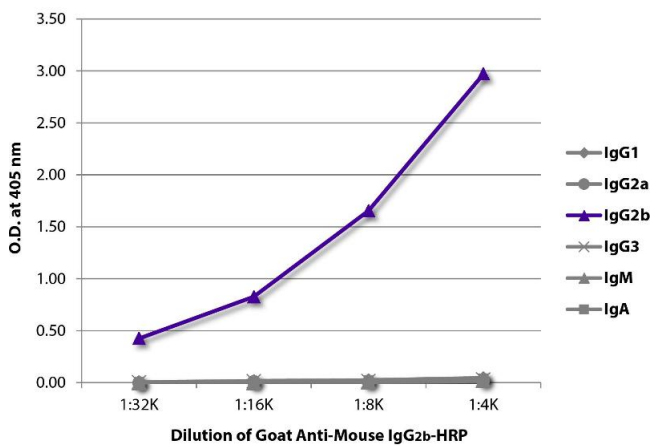
Buffer: 1.0 mg purified immunoglobulin in 1.0 mL of borate buffered saline, pH 8.2. No preservatives or amine-containing buffer salts added

Preservative: Without preservative

Storage: 4 °C, -20 °C

Storage Comment: Store at 2-8°C

Images



ELISA

Image 1. ELISA plate was coated with purified mouse IgG1, IgG2a, IgG2b, IgG3, IgM, and IgA. Immunoglobulins were detected with serially diluted Goat Anti-Mouse IgG2b-HRP.