

Datasheet for ABIN5707421

Goat anti-Rat IgG (Heavy & Light Chain) Antibody (beta-Gal) - Preadsorbed

[Go to Product page](#)

1 Image

Overview

Quantity:	1 mL
Target:	IgG
Binding Specificity:	Heavy & Light Chain
Reactivity:	Rat
Host:	Goat
Clonality:	Polyclonal
Conjugate:	beta-Gal
Application:	ELISA, Flow Cytometry (FACS), FLISA

Product Details

Isotype:	IgG
Specificity:	Reacts with the heavy and light chains of rat IgG and the light chains of rat IgM
Characteristics:	Goat Anti-Rat IgG(H+L), Mouse ads-BGAL
Purification:	Purification Method: Affinity chromatography on pooled rat IgG covalently linked to agarose. Preadsorption: Mouse adsorbed

Target Details

Target:	IgG
Abstract:	IgG Products
Target Type:	Antibody

Application Details

- Application Notes:
- **Applications:** Quality tested applications include - ELISA , FLISA FC ,
 - Other referenced applications include - IHC-FS , IHC-PS , ICC , WB , Sep
 - **Working Dilutions:** ELISA AP conjugate 1:2,000 - 1:4,000 HRP conjugate 1:4,000 - 1:8,000 BGAL conjugate 1:500 BIOT conjugate 1:5,000 - 1:20,000 FLISA FITC, TRITC, TXRD, AF488, and AF555 conjugates 1:100 - 1:400 PE and AF647 conjugates 1 g/mL Flow Cytometry FITC, BIOT, and AF488 conjugates 1 g/10⁶ cells PE and AF647 conjugates 0.1 g/10⁶ cells For flow cytometry, the suggested use of these reagents is in a final volume of 100 L

Restrictions: For Research Use only

Handling

Concentration: 0.5 mg/mL

Buffer: 0.5 mg in 1.0 mL or 0.25 mg in 0.5 mL of PBS/Sodium azide and a stabilizing agent

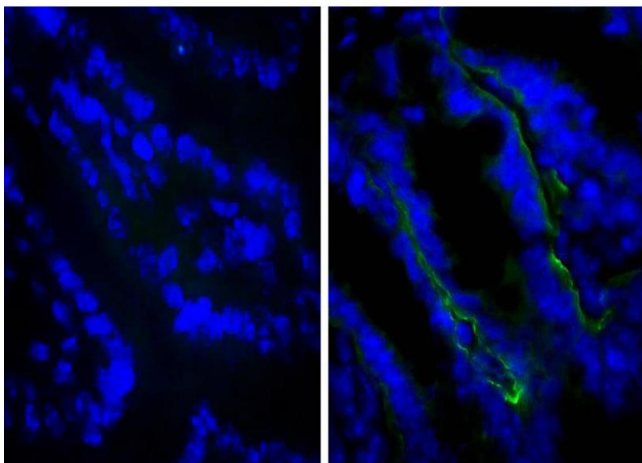
Preservative: Sodium azide

Precaution of Use: This product contains Sodium azide: a POISONOUS AND HAZARDOUS SUBSTANCE which should be handled by trained staff only.

Storage: 4 °C,-20 °C

Storage Comment: Store at 2-8°C

Images



Immunofluorescence

Image 1. Frozen BALB/c mouse intestine tissue was stained with Rat IgG2a-UNLB isotype control, and DAPI.