

Datasheet for ABIN5707488

**Rabbit anti-Mouse IgG (Heavy & Light Chain) Antibody (PE) -
Preadsorbed**[Go to Product page](#)**1** Image

Overview

Quantity:	0.5 mg
Target:	IgG
Binding Specificity:	Heavy & Light Chain
Reactivity:	Mouse
Host:	Rabbit
Clonality:	Polyclonal
Conjugate:	PE
Application:	ELISA, Flow Cytometry (FACS), FLISA

Product Details

Isotype:	IgG
Specificity:	Reacts with the heavy and light chains of mouse IgG and the light chains of mouse IgM and IgA
Characteristics:	Rabbit Anti-Mouse IgG(H+L), Human ads-PE
Purification:	Purification Method: Affinity chromatography on mouse IgG covalently linked to agarose. Preadsorption: Human Adsorbed

Target Details

Target:	IgG
Abstract:	IgG Products
Target Type:	Antibody

Application Details

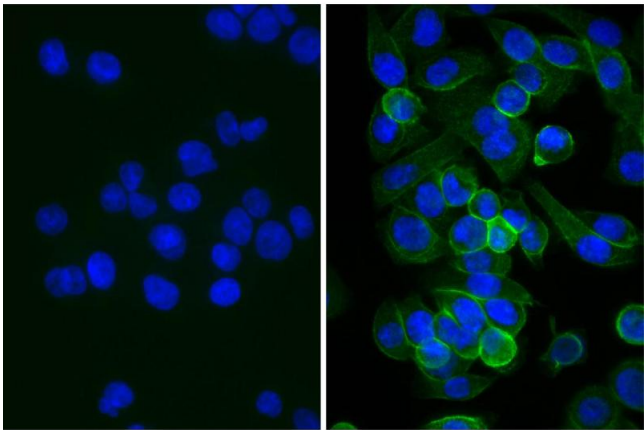
Application Notes:	<ul style="list-style-type: none">• Applications: Quality tested applications include - ELISA , FLISA FC ,• Other referenced applications include - WB , ICC• Working Dilutions: ELISA AP conjugate 1:2,000 - 1:4,000 HRP conjugate 1:4,000 - 1:8,000 BIOT conjugate 1:5,000 - 1:20,000 FLISA FITC conjugate 1:200 - 1:400 PE and AF647 conjugates ≤ 1 g/mL Flow Cytometry FITC and BIOT conjugates ≤ 1 g/10⁶ cells PE and AF647 conjugates ≤ 0.1 g/10⁶ cells For flow cytometry, the suggested use of these reagents is in a final volume of 100 L
--------------------	---

Restrictions:	For Research Use only
---------------	-----------------------

Handling

Concentration:	0.5 mg/mL
Buffer:	0.5 mg in 1.0 mL of PBS/Sodium azide and a stabilizing agent
Preservative:	Sodium azide
Precaution of Use:	This product contains Sodium azide: a POISONOUS AND HAZARDOUS SUBSTANCE which should be handled by trained staff only.
Storage:	4 °C,-20 °C
Storage Comment:	Store at 2-8°C

Images



Immunofluorescence

Image 1. Human pancreatic carcinoma cell line MIA PaCa-2 was stained with Mouse Anti-Human CD44-UNLB, and DAPI.