

Datasheet for ABIN5707495

Rat anti-Mouse IgG2b Antibody (FITC)[Go to Product page](#)**1** Image

Overview

Quantity:	0.5 mg
Target:	IgG2b
Reactivity:	Mouse
Host:	Rat
Clonality:	Monoclonal
Conjugate:	FITC
Application:	ELISA, Flow Cytometry (FACS), FLISA

Product Details

Immunogen:	Mouse IgG2b hybridoma
Clone:	SB74g
Isotype:	IgG2b
Specificity:	Mouse IgG2b
Characteristics:	Rat Anti-Mouse IgG2b-FITC

Target Details

Target:	IgG2b
Abstract:	IgG2b Products
Target Type:	Antibody

Application Details

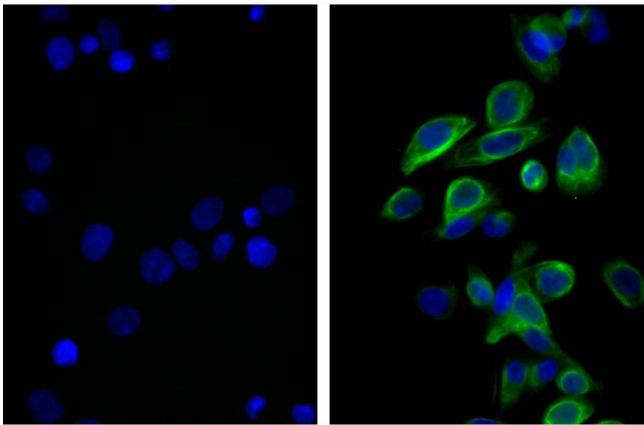
Application Notes:	<ul style="list-style-type: none">• Applications: FC - Quality tested ELISA - Quality tested , FLISA - Quality tested ICC , WB• Working Dilutions: Flow Cytometry FITC and BIOT conjugates 1.0 g/106 cells PE conjugate 0.1 g/106 cells For flow cytometry, the suggested use of these reagents is in a final volume of 100 L ELISA AP conjugate 1:1,000 - 1:4,000 HRP conjugate 1:4,000 - 1:8,000 BIOT conjugate 1:5,000 - 1:20,000 FLISA FITC conjugate 1:200 - 1:400 PE conjugate 1 g/mL
--------------------	--

Restrictions:	For Research Use only
---------------	-----------------------

Handling

Concentration:	0.5 mg/mL
Buffer:	0.5 mg in 1.0 mL of PBS/Sodium azide
Preservative:	Sodium azide
Precaution of Use:	This product contains Sodium azide: a POISONOUS AND HAZARDOUS SUBSTANCE which should be handled by trained staff only.
Storage:	4 °C,-20 °C
Storage Comment:	Store at 2-8°C

Images



Immunofluorescence

Image 1. Human pancreatic carcinoma cell line MIA PaCa-2 was stained with Mouse Anti-Cytokeratin 18-UNLB and DAPI.