

Datasheet for ABIN5707499

Rat anti-Mouse IgG2b Antibody[Go to Product page](#)**1** Image

Overview

Quantity:	0.5 mg
Target:	IgG2b
Reactivity:	Mouse
Host:	Rat
Clonality:	Monoclonal
Application:	ELISA, Flow Cytometry (FACS), FLISA

Product Details

Immunogen:	Mouse IgG2b hybridoma
Clone:	SB74g
Isotype:	IgG2b
Specificity:	Mouse IgG2b
Characteristics:	Rat Anti-Mouse IgG2b-UNLB

Target Details

Target:	IgG2b
Abstract:	IgG2b Products
Target Type:	Antibody

Application Details

Application Notes:

- **Applications:** FC - Quality tested ELISA - Quality tested , FLISA - Quality tested ICC , WB
- **Working Dilutions:** Flow Cytometry FITC and BIOT conjugates 1.0 g/106 cells PE conjugate 0.1 g/106 cells For flow cytometry, the suggested use of these reagents is in a final volume of 100 L ELISA AP conjugate 1:1,000 - 1:4,000 HRP conjugate 1:4,000 - 1:8,000 BIOT conjugate 1:5,000 - 1:20,000 FLISA FITC conjugate 1:200 - 1:400 PE conjugate 1 g/mL

Restrictions:

For Research Use only

Handling

Concentration:

0.5 mg/mL

Buffer:

0.5 mg of purified immunoglobulin in 1.0 mL of borate buffered saline, pH 8.2. No preservatives or amine-containing buffer salts added

Preservative:

Without preservative

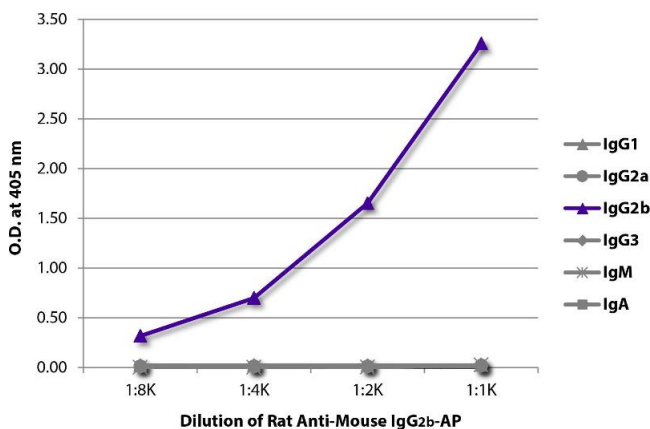
Storage:

4 °C,-20 °C

Storage Comment:

Store at 2-8°C

Images



ELISA

Image 1. ELISA plate was coated with purified mouse IgG1, IgG2a, IgG2b, IgG3, IgM, and IgA. Immunoglobulins were detected with serially diluted Rat Anti-Mouse IgG2b-AP.