

Datasheet for ABIN5707501

**Rat anti-Mouse IgG3 Antibody (Biotin)**[Go to Product page](#)**1** Image

## Overview

Quantity:	0.5 mg
Target:	IgG3
Reactivity:	Mouse
Host:	Rat
Clonality:	Monoclonal
Conjugate:	Biotin
Application:	ELISA, Flow Cytometry (FACS), FLISA

## Product Details

Immunogen:	Mouse IgG3 hybridoma
Clone:	SB76b
Isotype:	IgG2a
Specificity:	Mouse IgG3
Characteristics:	Rat Anti-Mouse IgG3-BIOT

## Target Details

Target:	IgG3
Abstract:	<a href="#">IgG3 Products</a>
Target Type:	Antibody

## Application Details

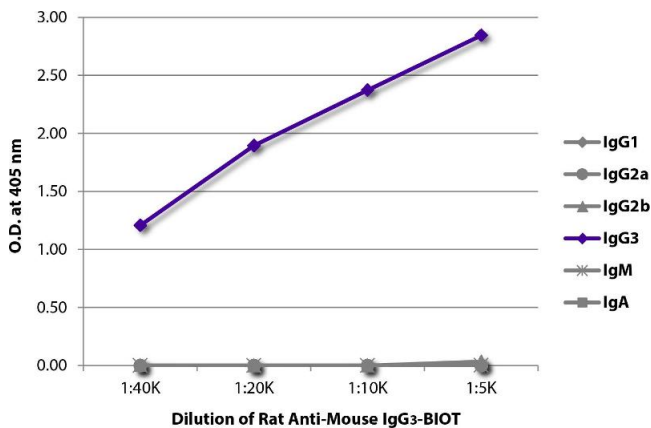
Application Notes:	<ul style="list-style-type: none"><li>• <b>Applications:</b> FC - Quality tested ELISA - Quality tested , FLISA - Quality tested</li><li>• <b>Working Dilutions:</b> Flow Cytometry FITC and BIOT conjugates 1.0 g/106 cells PE conjugate 0.1 g/106 cells For flow cytometry, the suggested use of these reagents is in a final volume of 100 L ELISA AP conjugate 1:1,000 - 1:2,000 HRP conjugate 1:4,000 - 1:8,000 BIOT conjugate 1:5,000 - 1:20,000 FLISA FITC conjugate 1:200 - 1:400 PE conjugate 1 g/mL</li></ul>
--------------------	---

Restrictions:	For Research Use only
---------------	-----------------------

## Handling

Concentration:	0.5 mg/mL
Buffer:	0.5 mg in 1.0 mL of PBS/Sodium azide
Preservative:	Sodium azide
Precaution of Use:	This product contains Sodium azide: a POISONOUS AND HAZARDOUS SUBSTANCE which should be handled by trained staff only.
Storage:	4 °C,-20 °C
Storage Comment:	Store at 2-8°C

## Images



### ELISA

**Image 1.** ELISA plate was coated with purified mouse IgG1, IgG2a, IgG2b, IgG3, IgM, and IgA. Immunoglobulins were detected with serially diluted Rat Anti-Mouse IgG3-BIOT.