

Datasheet for ABIN570758
anti-SMC5 antibody (Internal Region)

2 Images

[Go to Product page](#)

Overview

Quantity:	100 µg
Target:	SMC5
Binding Specificity:	Internal Region
Reactivity:	Human
Host:	Goat
Clonality:	Polyclonal
Conjugate:	This SMC5 antibody is un-conjugated
Application:	ELISA, Immunofluorescence (IF), Flow Cytometry (FACS)

Product Details

Purpose:	SMC5
Immunogen:	Peptide with sequence C-TSKHLEHKDNELRQ, from the Internal region of the protein sequence according to NP_055925.2.
Sequence:	TSKHLEHKDN ELRQ
Isotype:	IgG
Cross-Reactivity:	Cow, Dog, Human, Mouse, Rat
Purification:	Purified from goat serum by ammonium sulphate precipitation followed by antigen affinity chromatography using the immunizing peptide.
Grade:	Verified

Target Details

Target:	SMC5
Alternative Name:	SMC5 (SMC5 Products)
Background:	SMC5, structural maintenance of chromosomes 5, KIAA0594, SMC5L1, OTTHUMP00000063367, SMC5 protein, SMC5 structural maintenance of chromosomes 5-like 1
Gene ID:	23137, 226026, 293967
NCBI Accession:	NP_055925

Application Details

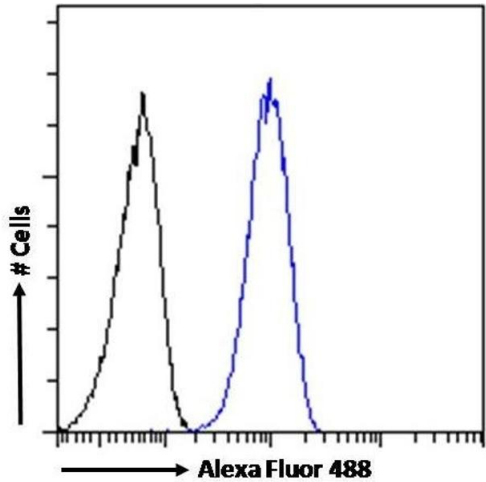
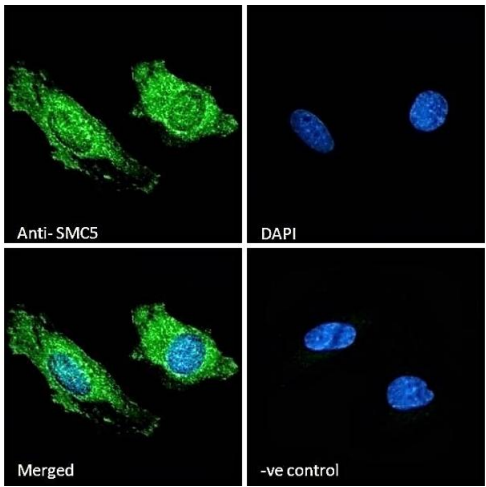
Application Notes:	Western Blot: Preliminary testing showed bands at approx 100+150 kDa in HEK293 nuclear lysates after 1 µg/mL antibody staining (calculated MW of 129 kDa according to NP_055925.2). These bands were successfully blocked by incubation with the immunizing pept Peptide ELISA: antibody detection limit dilution 1:128000.
Comment:	Immunofluorescence: Strong expression of the protein seen in HeLa cells. Recommended concentration: 10µg/ml. Flow Cytometry: Flow cytometric analysis of HeLa cells. Recommended concentration: 10ug/ml.
Restrictions:	For Research Use only

Handling

Format:	Liquid
Concentration:	0.5 mg/mL
Buffer:	Supplied at 0.5 mg/mL in Tris saline, 0.02 % sodium azide, pH 7.3 with 0.5 % bovine serum albumin.
Preservative:	Sodium azide
Precaution of Use:	This product contains Sodium azide: a POISONOUS AND HAZARDOUS SUBSTANCE which should be handled by trained staff only.
Handling Advice:	Minimize freezing and thawing.
Storage:	-20 °C
Storage Comment:	Aliquot and store at -20°C, with minimal freeze/thawing. A working aliquot may be refrigerated

at 4°C for a few weeks and still remain viable.

Images



Immunofluorescence

Image 1. (ABIN570758) Immunofluorescence analysis of paraformaldehyde fixed HeLa cells, permeabilized with 0.15 % Triton. Primary incubation 1hr (10 µg/mL) followed by Alexa Fluor 488 secondary antibody (2 µg/mL), showing speckled nuclear and cytoplasmic staining. The nuc

Flow Cytometry

Image 2. (ABIN570758) Flow cytometric analysis of paraformaldehyde fixed HeLa cells (blue line), permeabilized with 0.5 % Triton. Primary incubation 1hr (10 µg/mL) followed by Alexa Fluor 488 secondary antibody (1 µg/mL). IgG control: Unimmunized goat IgG (black line) fol