

Datasheet for ABIN570764  
**anti-SLC2A5 antibody (C-Term)**[Go to Product page](#)

## 1 Image

## Overview

Quantity:	100 µg
Target:	SLC2A5
Binding Specificity:	C-Term
Reactivity:	Human
Host:	Goat
Clonality:	Polyclonal
Conjugate:	This SLC2A5 antibody is un-conjugated
Application:	Immunohistochemistry (IHC), ELISA

## Product Details

Purpose:	GLUT5 / SLC2A5
Immunogen:	Peptide with sequence C-SEVYPEKEELKE, from the C Terminus of the protein sequence according to NP_003030.1.
Sequence:	SEVYPEKEEL KE
Isotype:	IgG
Cross-Reactivity:	Human
Purification:	Purified from goat serum by ammonium sulphate precipitation followed by antigen affinity chromatography using the immunizing peptide.
Grade:	Verified

## Target Details

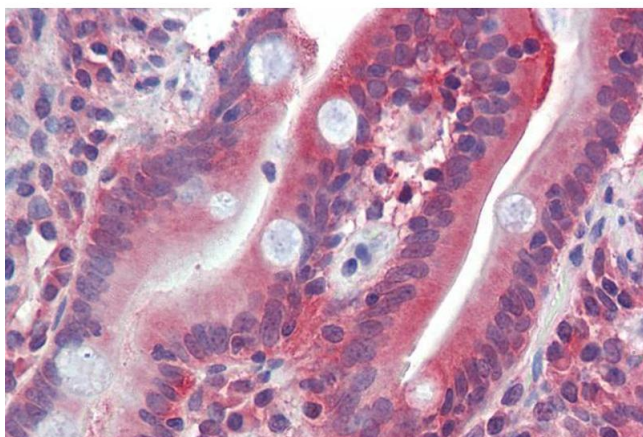
Target:	SLC2A5
Alternative Name:	SLC2A5 ( <a href="#">SLC2A5 Products</a> )
Background:	SLC2A5, solute carrier family 2 (facilitated glucose/fructose transporter), member 5, GLUT5, OTTHUMP00000001704, glucose transporter-like protein 5, solute carrier family 2 (facilitated glucose transporter), member 5
Gene ID:	6518
NCBI Accession:	<a href="#">NP_003030</a>

## Application Details

Application Notes:	Immunohistochemistry: Paraffin embedded Human Small Intestine. Recommended concentration: 2.5 µg/mL.  Western Blot: Preliminary experiments gave an approx 38 kDa band in Human Duodenum, Kidney and Skeletal Muscle lysates after 1 µg/mL antibody staining. Please note that currently we cannot find an explanation in the literature for the band we observe given  Peptide ELISA: antibody detection limit dilution 1:8000.
Restrictions:	For Research Use only

## Handling

Format:	Liquid
Concentration:	0.5 mg/mL
Buffer:	Supplied at 0.5 mg/mL in Tris saline, 0.02 % sodium azide, pH 7.3 with 0.5 % bovine serum albumin.
Preservative:	Sodium azide
Precaution of Use:	This product contains Sodium azide: a POISONOUS AND HAZARDOUS SUBSTANCE which should be handled by trained staff only.
Handling Advice:	Minimize freezing and thawing.
Storage:	-20 °C
Storage Comment:	Aliquot and store at -20°C, with minimal freeze/thawing. A working aliquot may be refrigerated at 4°C for a few weeks and still remain viable.



#### Immunohistochemistry

**Image 1.** ABIN570764 (2.5µg/ml) staining of paraffin embedded Human Small Intestine. Steamed antigen retrieval with citrate buffer pH 6, AP-staining.