

Datasheet for ABIN570776
anti-TPCN2 antibody (C-Term)

2 Images

[Go to Product page](#)

Overview

Quantity:	100 µg
Target:	TPCN2
Binding Specificity:	C-Term
Reactivity:	Human
Host:	Goat
Clonality:	Polyclonal
Conjugate:	This TPCN2 antibody is un-conjugated
Application:	ELISA, Immunohistochemistry (IHC)

Product Details

Purpose:	TPCN2
Immunogen:	Peptide with sequence C-EDELTERLSQHPH, from the C Terminus of the protein sequence according to NP_620714.2.
Sequence:	EDELTERLSQ HPH
Isotype:	IgG
Cross-Reactivity:	Human
Purification:	Purified from goat serum by ammonium sulphate precipitation followed by antigen affinity chromatography using the immunizing peptide.
Grade:	Verified

Target Details

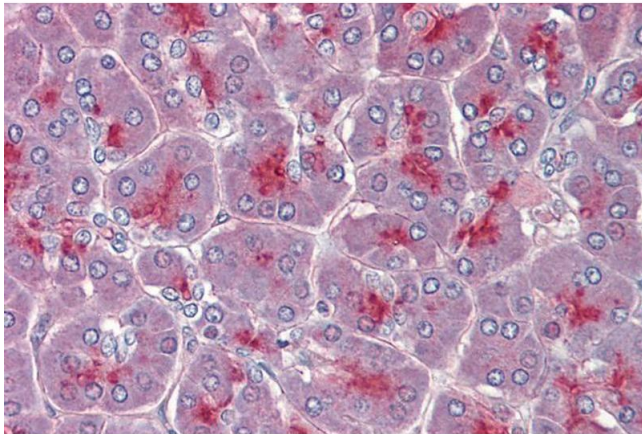
Target:	TPCN2
Alternative Name:	TPCN2 (TPCN2 Products)
Background:	TPCN2, two pore segment channel 2, FLJ41094, SHEP10, TPC2, two-pore calcium channel protein 2
Gene ID:	219931
NCBI Accession:	NP_620714

Application Details

Application Notes:	<p>Immunohistochemistry: Paraffin embedded Human Pancreas and Colon. Recommended concentration: 3.75 µg/mL.</p> <p>Western Blot: Preliminary experiments gave an approx 30 kDa band in Human Brain (Cerebral Cortex), Kidney and Liver lysates after 0.5 µg/mL antibody staining. Please note that currently we cannot find an explanation in the literature for the band we observe</p> <p>Peptide ELISA: antibody detection limit dilution 1:16000.</p>
Restrictions:	For Research Use only

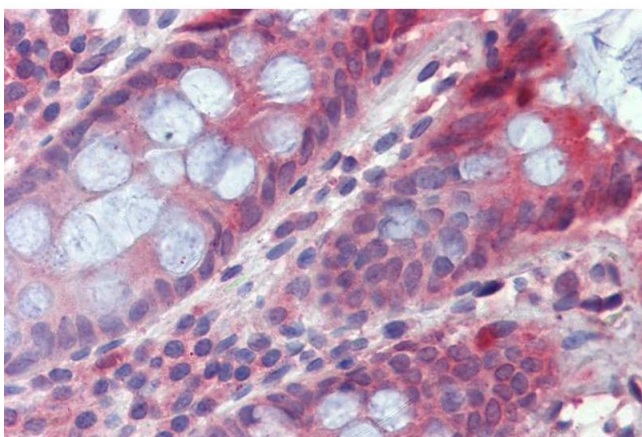
Handling

Format:	Liquid
Concentration:	0.5 mg/mL
Buffer:	Supplied at 0.5 mg/mL in Tris saline, 0.02 % sodium azide, pH 7.3 with 0.5 % bovine serum albumin.
Preservative:	Sodium azide
Precaution of Use:	This product contains Sodium azide: a POISONOUS AND HAZARDOUS SUBSTANCE which should be handled by trained staff only.
Handling Advice:	Minimize freezing and thawing.
Storage:	-20 °C
Storage Comment:	Aliquot and store at -20°C, with minimal freeze/thawing. A working aliquot may be refrigerated at 4°C for a few weeks and still remain viable.



Immunohistochemistry

Image 1. ABIN570776 (3.75µg/ml) staining of paraffin embedded Human Pancreas. Steamed antigen retrieval with citrate buffer pH 6, AP-staining.



Immunohistochemistry

Image 2. ABIN570776 (3.75µg/ml) staining of paraffin embedded Human Colon. Steamed antigen retrieval with citrate buffer pH 6, AP-staining.