

Datasheet for ABIN570794  
**anti-CCL20 antibody (Internal Region)**



[Go to Product page](#)

1 Image

## Overview

Quantity:	100 µg
Target:	CCL20
Binding Specificity:	Internal Region
Reactivity:	Human
Host:	Goat
Clonality:	Polyclonal
Conjugate:	This CCL20 antibody is un-conjugated
Application:	Immunohistochemistry (IHC), ELISA

## Product Details

Purpose:	CCL20
Immunogen:	Peptide with sequence CLGYTDRILHPK, from the internal region of the protein sequence according to NP_004582.1, NP_001123518.1.
Sequence:	CLGYTDRILH PK
Isotype:	IgG
Specificity:	This antibody is expected to recognize both isoforms (NP_004582.1, NP_001123518.1).
Cross-Reactivity:	Cow, Human, Pig
Purification:	Purified from goat serum by ammonium sulphate precipitation followed by antigen affinity chromatography using the immunizing peptide.
Grade:	Verified

## Target Details

---

Target:	CCL20
Alternative Name:	CCL20 ( <a href="#">CCL20 Products</a> )
Background:	CCL20, chemokine (C-C motif) ligand 20, CKb4, LARC, MIP-3a, MIP3A, SCYA20, ST38, exodus-1, macrophage inflammatory protein 3 alpha, small inducible cytokine subfamily A (Cys-Cys), member 20
Gene ID:	6364
NCBI Accession:	<a href="#">NP_004582</a> , <a href="#">NP_001123518</a>
Pathways:	<a href="#">The Global Phosphorylation Landscape of SARS-CoV-2 Infection</a>

## Application Details

---

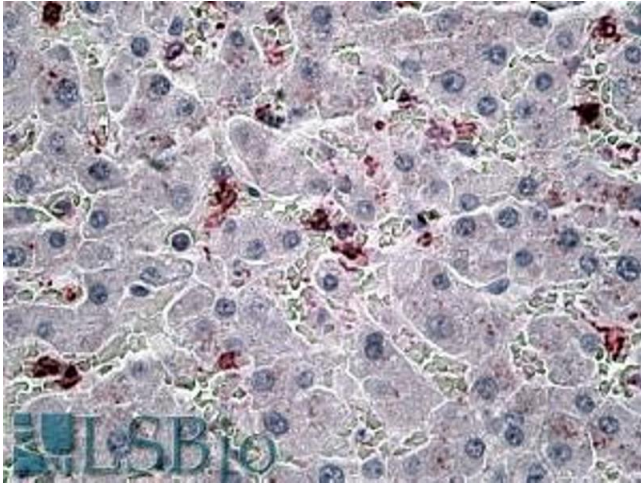
Application Notes:	Immunohistochemistry: In paraffin embedded Human Liver shows local staining between the hepatocytes. Recommended concentration, 6-8 µg/mL. Western Blot: Preliminary experiments in Human Peripheral Blood Mononucleocytes lysates gave no specific signal but low background (at antibody concentration up to 2 µg/mL). Peptide ELISA: antibody detection limit dilution 1:16000.
--------------------	--

Restrictions:	For Research Use only
---------------	-----------------------

## Handling

---

Format:	Liquid
Concentration:	0.5 mg/mL
Buffer:	Supplied at 0.5 mg/mL in Tris saline, 0.02 % sodium azide, pH 7.3 with 0.5 % bovine serum albumin.
Preservative:	Sodium azide
Precaution of Use:	This product contains Sodium azide: a POISONOUS AND HAZARDOUS SUBSTANCE which should be handled by trained staff only.
Handling Advice:	Minimize freezing and thawing.
Storage:	-20 °C
Storage Comment:	Aliquot and store at -20°C, with minimal freeze/thawing. A working aliquot may be refrigerated at 4°C for a few weeks and still remain viable.



### Immunohistochemistry

**Image 1.** ABIN570794 (6 $\mu$ g/ml) staining of paraffin embedded Human Liver. Steamed antigen retrieval with citrate buffer pH 6, AP-staining.