

Datasheet for ABIN5707997

**anti-MAML3 antibody**

## 4 Images

[Go to Product page](#)

## Overview

Quantity:	100 µg
Target:	MAML3
Reactivity:	Human
Host:	Mouse
Clonality:	Monoclonal
Conjugate:	This MAML3 antibody is un-conjugated
Application:	Flow Cytometry (FACS), Immunofluorescence (IF), Immunohistochemistry (Paraffin-embedded Sections) (IHC (p))

## Product Details

Immunogen:	A human full length recombinant protein was used as the immunogen for this MAML3 antibody.
Clone:	MAML3-1303
Isotype:	IgG1
Purification:	Purified
Purity:	Protein G affinity chromatography

## Target Details

Target:	MAML3
Alternative Name:	MAML3 ( <a href="#">MAML3 Products</a> )

## Target Details

---

Background:	Mastermind-like 3 is a nuclear speckle protein that acts as a transcriptional coactivator for Notch receptors. The Notch signaling pathway influences cell fate by regulating the ability of precursor cells to properly respond to developmental signals. MAML3 is a member of the mastermind-like family of proteins that are human homologs of the Drosophila melanogaster mastermind protein. Through its N-terminal region, MAML3 interacts with the ankyrin repeats of the Notch 1-4 proteins. This interaction leads to formation of a DNA-binding complex with the Notch proteins and RBP-Jk, a complex that can then induce HES1 gene expression. While the N-terminal domain of MAML3 is essential for proper Notch binding, the C-terminal domain is essential for transcriptional activation. Due to its involvement in cell signaling and transcriptional activation, its upregulation is thought to be involved in oncogenesis.
-------------	---

## Application Details

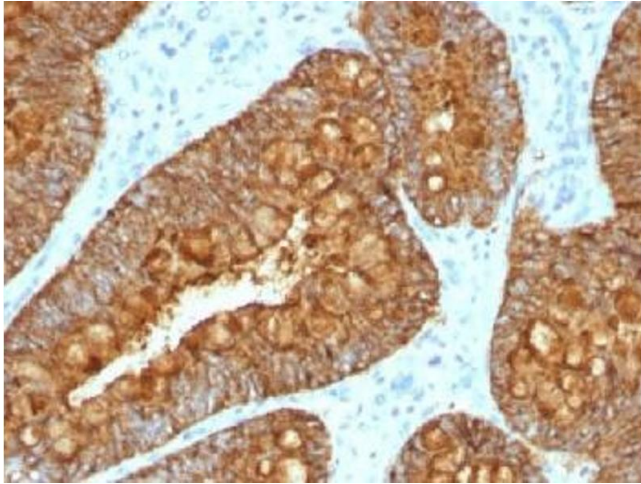
---

Application Notes:	The concentration stated for each application is a general starting point. Variations in protocols, secondaries and substrates may require the MAML3 antibody to be titrated up or down for optimal performance.\. FACS: 0.5-1 µg/10 <sup>6</sup> cells,Immunofluorescence: 1-2 µg/mL,Immunohistochemistry (FFPE): 0.5-1 µg/mL
Restrictions:	For Research Use only

## Handling

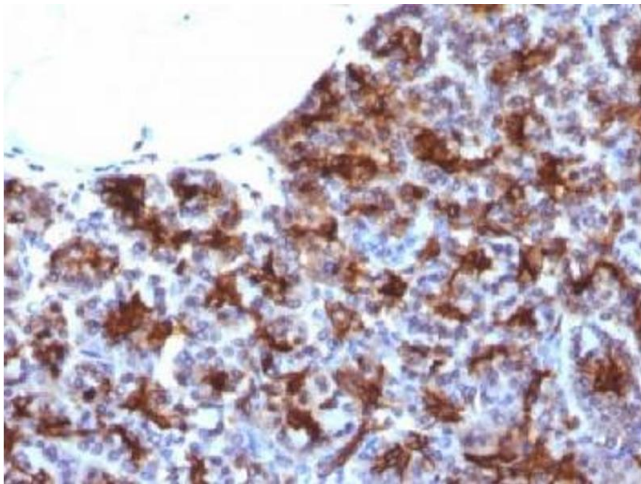
---

Buffer:	1 mg/mL in 1X PBS, BSA free, sodium azide free
Preservative:	Azide free
Storage:	4 °C,-20 °C
Storage Comment:	Store the MAML3 antibody at 2-8oC (with azide) or aliquot and store at -20oC or colder (without azide).



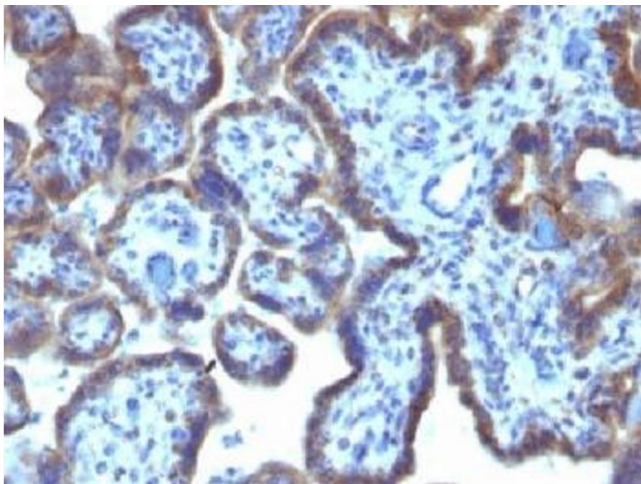
#### Immunohistochemistry

**Image 1.** IHC testing of FFPE human colon carcinoma with MAML3 antibody (clone MAML3/1303). Staining of FFPE tissue requires boiling sections in 10mM Tris with 1mM EDTA, pH9, for 10-20 min followed by cooling at RT for 20 min.



#### Immunohistochemistry

**Image 2.** IHC testing of FFPE human pancreas with MAML3 antibody (clone MAML3/1303). Staining of FFPE tissue requires boiling sections in 10mM Tris with 1mM EDTA, pH9, for 10-20 min followed by cooling at RT for 20 min.



#### Immunohistochemistry

**Image 3.** IHC testing of FFPE human placenta with MAML3 antibody (clone MAML3/1303). Staining of FFPE tissue requires boiling sections in 10mM Tris with 1mM EDTA, pH9, for 10-20 min followed by cooling at RT for 20 min.

Please check the [product details page](#) for more images. Overall 4 images are available for ABIN5707997.