



Datasheet for ABIN570800
anti-SLC01B3 antibody (Internal Region)



[Go to Product page](#)

3 Images

Overview

Quantity:	100 µg
Target:	SLC01B3
Binding Specificity:	Internal Region
Reactivity:	Human
Host:	Goat
Clonality:	Polyclonal
Conjugate:	This SLC01B3 antibody is un-conjugated
Application:	ELISA, Western Blotting (WB), Immunofluorescence (IF), Flow Cytometry (FACS)

Product Details

Purpose:	SLC01B3
Immunogen:	Peptide with sequence C-NGTSPEIVEKD, from the internal region of the protein sequence according to NP_062818.1.
Sequence:	NGTSPEIVEK D
Isotype:	IgG
Cross-Reactivity:	Dog, Human, Mouse
Purification:	Purified from goat serum by ammonium sulphate precipitation followed by antigen affinity chromatography using the immunizing peptide.
Grade:	Verified

Target Details

Target:	SLC01B3
Alternative Name:	SLC01B3 (SLC01B3 Products)
Background:	SLC01B3, solute carrier organic anion transporter family, member 1B3, LST-3TM13, LST3, OATP1B3, OATP8, SLC21A8, liver-specific organic anion transporter 3TM13, organic anion transporter LST-3c, solute carrier family 21 (organic anion transporter), member
Gene ID:	28234, 28253
NCBI Accession:	NP_062818 , NP_001336849

Application Details

Application Notes:	Western Blot: Approx 75 kDa band observed in lysates of cell line HEK293 and A431 (calculated MW of 74.2 kDa according to NP_001336849.1 and 77.4 kDa according to NP_062818.1). Recommended concentration: 0.5-1 µg/mL. Primary incubation 1 hour at room temperature Peptide ELISA: antibody detection limit dilution 1:128000.
Comment:	Immunofluorescence: Strong expression of the protein seen in the membranes of A431 cells. Recommended concentration: 10µg/ml. Flow Cytometry: Flow cytometric analysis of HepG2 cells. Recommended concentration: 10ug/ml.
Restrictions:	For Research Use only

Handling

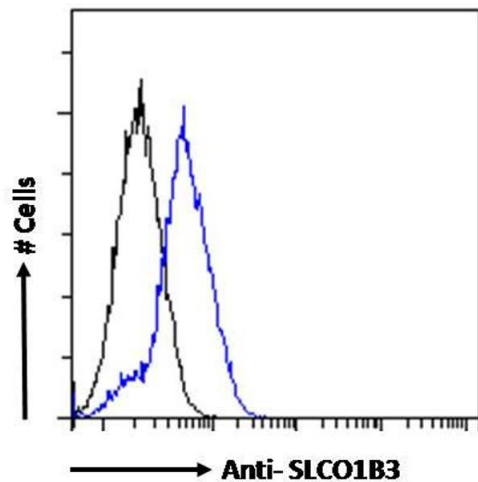
Format:	Liquid
Concentration:	0.5 mg/mL
Buffer:	Supplied at 0.5 mg/mL in Tris saline, 0.02 % sodium azide, pH 7.3 with 0.5 % bovine serum albumin.
Preservative:	Sodium azide
Precaution of Use:	This product contains Sodium azide: a POISONOUS AND HAZARDOUS SUBSTANCE which should be handled by trained staff only.
Handling Advice:	Minimize freezing and thawing.
Storage:	-20 °C
Storage Comment:	Aliquot and store at -20°C, with minimal freeze/thawing. A working aliquot may be refrigerated

at 4°C for a few weeks and still remain viable.



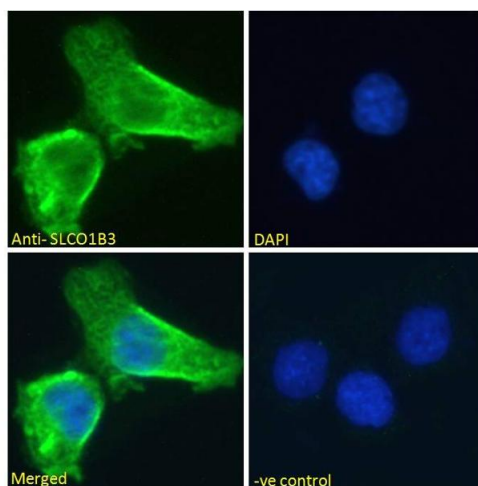
Western Blotting

Image 1. ABIN570800 (1µg/ml) staining of HEK293 (A) and A431 (B) cell lysate (35µg protein in RIPA buffer). Detected by chemiluminescence.



Flow Cytometry

Image 2. ABIN570800 Flow cytometric analysis of paraformaldehyde fixed HepG2 cells (blue line), permeabilized with 0.5% Triton. Primary incubation overnight (10ug/ml) followed by Alexa Fluor 488 secondary antibody (1ug/ml). IgG control: Unimmunized goat IgG (black li



Immunofluorescence

Image 3. ABIN570800 Immunofluorescence analysis of paraformaldehyde fixed A431 cells, permeabilized with 0.15% Triton. Primary incubation 1hr (10ug/ml) followed by Alexa Fluor 488 secondary antibody (2ug/ml), showing membrane staining. The nuclear stain is DAPI (blue). Negative control: Unimmunized goat IgG (10ug/ml) followed by Alexa Fluor 488 secondary antibody (2ug/ml).