

Datasheet for ABIN5708071

anti-CKS2 antibody (Regulatory Subunit 2)[Go to Product page](#)**1** Image

Overview

Quantity:	0.05 mL
Target:	CKS2
Binding Specificity:	AA 6-40, Regulatory Subunit 2
Reactivity:	Human
Host:	Rabbit
Clonality:	Polyclonal
Conjugate:	This CKS2 antibody is un-conjugated
Application:	Western Blotting (WB)

Product Details

Immunogen:	A portion of amino acids 6-40 from human CKS2 was used as the immunogen for the CKS2 antibody.
Isotype:	Ig Fraction
Cross-Reactivity (Details):	Expected species reactivity: Mouse,Bovine
Purification:	Antigen affinity purified

Target Details

Target:	CKS2
Alternative Name:	CKS2 (CKS2 Products)
Background:	Cyclin-dependent kinases regulatory subunit 2 (CKS2) binds to the catalytic subunit of the

Target Details

cyclin dependent kinases and is essential for their biological function.

UniProt: [P33552](#)

Application Details

Application Notes: The stated application concentrations are suggested starting points. Titration of the CKS2 antibody may be required due to differences in protocols and secondary/substrate sensitivity.\.

WB: 1:1000-1:2000

Restrictions: For Research Use only

Handling

Buffer: In 1X PBS, pH 7.4, with 0.09 % sodium azide

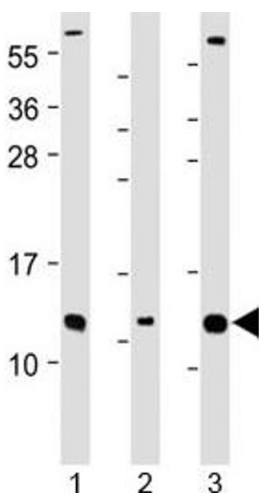
Preservative: Sodium azide

Precaution of Use: This product contains Sodium azide: a POISONOUS AND HAZARDOUS SUBSTANCE which should be handled by trained staff only.

Storage: -20 °C

Storage Comment: Aliquot the CKS2 antibody and store frozen at -20°C or colder. Avoid repeated freeze-thaw cycles.

Images



Western Blotting

Image 1. Western blot testing of human 1) Caco-2, 2) RMPI-8226 and 3) SH-SY5Y cell lysate with CKS2 antibody at 1:2000. Predicted molecular weight ~10 kDa.