

Datasheet for ABIN5708087
anti-IL27 antibody (AA 29-243)[Go to Product page](#)

1 Image

Overview

Quantity:	100 µg
Target:	IL27
Binding Specificity:	AA 29-243
Reactivity:	Human
Host:	Rabbit
Clonality:	Polyclonal
Application:	Western Blotting (WB), ELISA

Product Details

Immunogen:	A recombinant human protein corresponding to amino acids F29-P243 was used as the immunogen for the IL-27 antibody.
Isotype:	IgG
Purification:	Antigen affinity purified

Target Details

Target:	IL27
Alternative Name:	IL-27 (alpha subunit) (IL27 Products)
Background:	Interleukin 27 (IL-27) is a member of the IL-12 cytokine family. The protein encoded by this gene is one of the subunits of a heterodimeric cytokine complex. This protein is related to interleukin 12A (IL12A). It interacts with Epstein-Barr virus induced gene 3 (EBI3), a protein similar to interleukin 12B (IL12B), and forms a complex that has been shown to drive rapid expansion of

Target Details

naive but not memory CD4(+) T cells. The complex is also found to synergize strongly with interleukin 12 to trigger interferon gamma (IFNG) production of naive CD4(+) T cells. The biological effects of this cytokine are mediated by the class I cytokine receptor (WSX1/TCRR).

UniProt: [Q8NEV9](#)

Application Details

Application Notes: Optimal dilution of the IL-27 antibody should be determined by the researcher.\. Western Blot: 0.5-1 µg/mL,ELISA (Capture): 0.1-0.5 µg/mL

Restrictions: For Research Use only

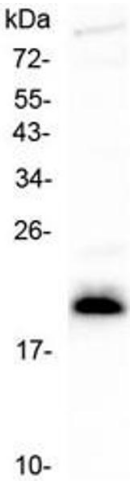
Handling

Buffer: 0.5 mg/mL if reconstituted with 0.2 mL sterile DI water

Storage: -20 °C

Storage Comment: After reconstitution, the IL-27 antibody can be stored for up to one month at 4°C. For long-term, aliquot and store at -20°C. Avoid repeated freezing and thawing.

Images



Western Blotting

Image 1. Western blot testing of human CCRF-CEM cell lysate with IL-27 antibody at 0.5ug/ml. Predicted molecular weight ~28 kDa, observed here at ~20 kDa.