

Datasheet for ABIN570821
anti-MLX antibody (Internal Region)[Go to Product page](#)

1 Image

Overview

Quantity:	100 µg
Target:	MLX
Binding Specificity:	Internal Region
Reactivity:	Human
Host:	Goat
Clonality:	Polyclonal
Conjugate:	This MLX antibody is un-conjugated
Application:	ELISA, Immunohistochemistry (IHC)

Product Details

Purpose:	MLX
Immunogen:	Peptide with sequence C-QIVKAHQDNPHEGED, from the internal region of the protein sequence according to NP_937848.1, NP_937847.1, NP_733752.1.
Sequence:	QIVKAHQDNP HEGED
Isotype:	IgG
Specificity:	This antibody is expected to recognize all three reported isoforms (NP_937848.1, NP_937847.1, NP_733752.1).
Cross-Reactivity:	Cow, Dog, Human, Mouse, Rat
Purification:	Purified from goat serum by ammonium sulphate precipitation followed by antigen affinity chromatography using the immunizing peptide.

Product Details

Grade: Verified

Target Details

Target: MLX

Alternative Name: MLX ([MLX Products](#))

Background: MLX, MAX-like protein X, MAD7, MXD7, TCFL4, bHLHd13, BigMax protein, MAX-like bHLHZIP protein, transcription factor-like 4, transcription factor-like protein 4

Gene ID: 6945, 21428, 360631

NCBI Accession: [NP_937848](#), [NP_937847](#), [NP_733752](#)

Application Details

Application Notes: Immunohistochemistry: In paraffin embedded Human Placenta shows nuclear staining of trophoblasts. Recommended concentration: 2.5-3.8 µg/mL.
Western Blot: Preliminary experiments in Human, Mouse and Rat Liver lysates gave no specific signal but low background (at antibody concentration up to 1 µg/mL).
Peptide ELISA: antibody detection limit dilution 1:128000.

Restrictions: For Research Use only

Handling

Format: Liquid

Concentration: 0.5 mg/mL

Buffer: Supplied at 0.5 mg/mL in Tris saline, 0.02 % sodium azide, pH 7.3 with 0.5 % bovine serum albumin.

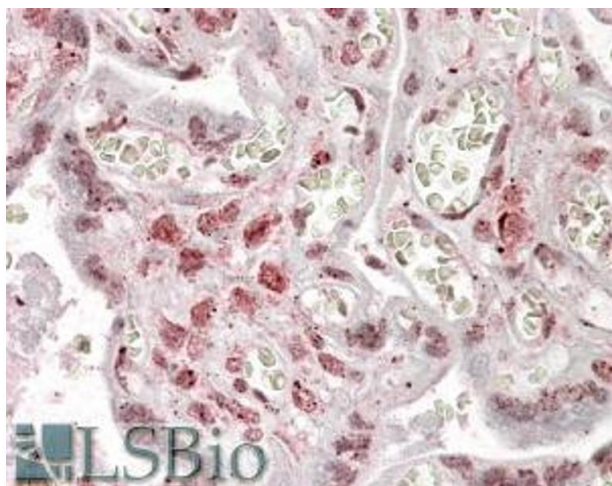
Preservative: Sodium azide

Precaution of Use: This product contains Sodium azide: a POISONOUS AND HAZARDOUS SUBSTANCE which should be handled by trained staff only.

Handling Advice: Minimize freezing and thawing.

Storage: -20 °C

Storage Comment: Aliquot and store at -20°C, with minimal freeze/thawing. A working aliquot may be refrigerated at 4°C for a few weeks and still remain viable.



Immunohistochemistry

Image 1. ABIN570821 (3.8µg/ml) staining of paraffin embedded Human Placenta. Steamed antigen retrieval with citrate buffer pH 6, AP-staining.