



[Go to Product page](#)

Datasheet for ABIN570822

## anti-Kcne3 antibody (Internal Region)

### 1 Image

#### Overview

Quantity:	100 µg
Target:	Kcne3
Binding Specificity:	Internal Region
Reactivity:	Human
Host:	Goat
Clonality:	Polyclonal
Conjugate:	This Kcne3 antibody is un-conjugated
Application:	ELISA, Immunohistochemistry (IHC)

#### Product Details

Purpose:	KCNE3
Immunogen:	Peptide with sequence C-PDNQTEERRASLP, from the Internal region of the protein sequence according to NP_005463.1.
Sequence:	PDNQTEERRA SLP
Isotype:	IgG
Cross-Reactivity:	Cow, Dog, Human, Mouse, Pig, Rat
Purification:	Purified from goat serum by ammonium sulphate precipitation followed by antigen affinity chromatography using the immunizing peptide.
Grade:	Verified

## Target Details

---

Target:	Kcne3
Alternative Name:	KCNE3 ( <a href="#">Kcne3 Products</a> )
Background:	KCNE3, potassium voltage-gated channel, Isk-related family, member 3, DKFZp781H21101, HOKPP, MGC102685, MGC129924, MiRP2, cardiac voltage-gated potassium channel accessory subunit, minK-related peptide 2, minimum potassium ion channel-related peptide 2, p
Gene ID:	10008, 57442, 63883
NCBI Accession:	<a href="#">NP_005463</a>

## Application Details

---

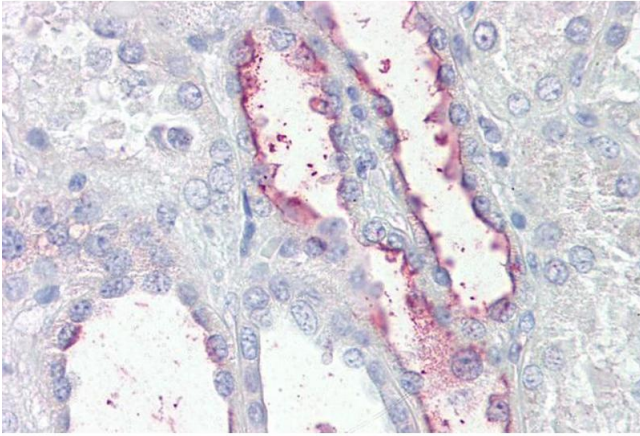
Application Notes:	Immunohistochemistry: Paraffin embedded Human Kidney. Recommended concentration: 3.75 µg/mL. Western Blot: Preliminary experiments in Human, Mouse and Rat Skeletal Muscle lysates gave no specific signal but low background (at antibody concentration up to 1 µg/mL). Peptide ELISA: antibody detection limit dilution 1:1000.
--------------------	---

Restrictions:	For Research Use only
---------------	-----------------------

## Handling

---

Format:	Liquid
Concentration:	0.5 mg/mL
Buffer:	Supplied at 0.5 mg/mL in Tris saline, 0.02 % sodium azide, pH 7.3 with 0.5 % bovine serum albumin.
Preservative:	Sodium azide
Precaution of Use:	This product contains Sodium azide: a POISONOUS AND HAZARDOUS SUBSTANCE which should be handled by trained staff only.
Handling Advice:	Minimize freezing and thawing.
Storage:	-20 °C
Storage Comment:	Aliquot and store at -20°C, with minimal freeze/thawing. A working aliquot may be refrigerated at 4°C for a few weeks and still remain viable.



### Immunohistochemistry

**Image 1.** ABIN570822 (3.75 $\mu$ g/ml) staining of paraffin embedded Human Kidney. Steamed antigen retrieval with citrate buffer pH 6, AP-staining.