



Datasheet for ABIN5708263

anti-PAX5 antibody



[Go to Product page](#)

3 Images

Overview

Quantity:	100 µg
Target:	PAX5
Reactivity:	Human, Mouse, Rat
Host:	Rabbit
Clonality:	Polyclonal
Conjugate:	This PAX5 antibody is un-conjugated
Application:	Western Blotting (WB), ELISA, Immunohistochemistry (Paraffin-embedded Sections) (IHC (p))

Product Details

Immunogen:	A recombinant human partial protein corresponding to amino acids R217-A282 was used as the immunogen for the PAX5 antibody.
Isotype:	IgG
Purification:	Antigen affinity purified

Target Details

Target:	PAX5
Alternative Name:	PAX5 (PAX5 Products)
Background:	Paired box protein Pax-5 is a protein that in humans is encoded by the PAX5 gene. The PAX5 gene is a member of the paired box (PAX) family of transcription factors. The central feature of this gene family is a novel, highly conserved DNA-binding domain, known as the paired box. The PAX proteins are important regulators in early development, and alterations in the expression of

Target Details

their genes are thought to contribute to neoplastic transformation. The PAX5 gene encodes the B-cell lineage specific activator protein (BSAP) that is expressed at early, but not late stages of B-cell differentiation. Its expression has also been detected in developing CNS and testis, therefore, PAX5 gene product may not only play an important role in B-cell differentiation, but also in neural development and spermatogenesis.

UniProt: [Q02548](#)

Application Details

Application Notes: Optimal dilution of the PAX5 antibody should be determined by the researcher.\. Western Blot: 0.5-1 µg/mL,IHC (FFPE): 1-2 µg/mL,Direct ELISA: 0.1-0.5 µg/mL

Restrictions: For Research Use only

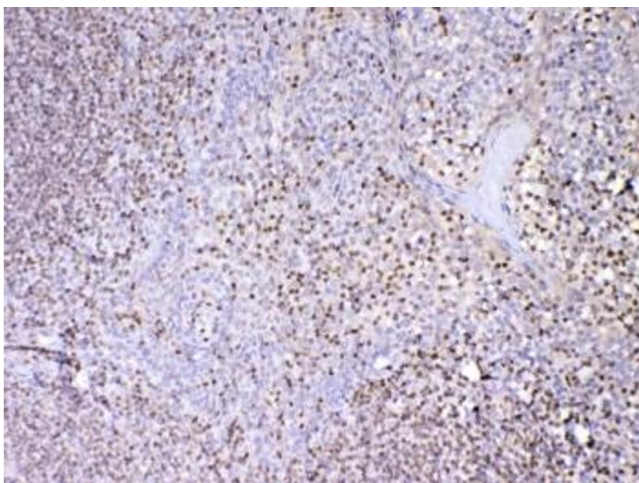
Handling

Buffer: 0.5 mg/mL if reconstituted with 0.2 mL sterile DI water

Storage: -20 °C

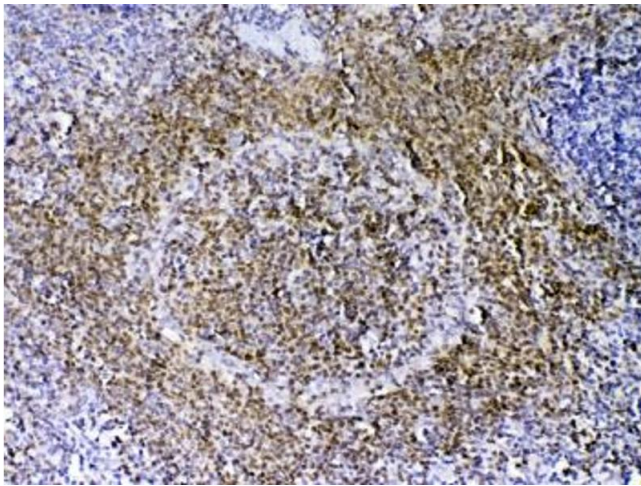
Storage Comment: After reconstitution, the PAX5 antibody can be stored for up to one month at 4°C. For long-term, aliquot and store at -20°C. Avoid repeated freezing and thawing.

Images



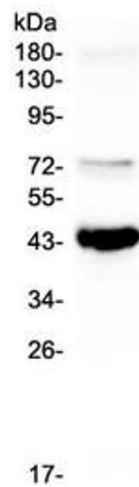
Immunohistochemistry

Image 1. IHC testing of FFPE human tonsil tissue with PAX5 antibody at 1ug/ml. Required HIER: steam section in pH6 citrate buffer for 20 min and allow to cool prior to testing.



Immunohistochemistry

Image 2. IHC testing of FFPE rat spleen tissue with PAX5 antibody at 1ug/ml. Required HIER: steam section in pH6 citrate buffer for 20 min and allow to cool prior to testing.



Western Blotting

Image 3. Western blot testing of human Raji cell lysate with PAX5 antibody at 0.5ug/ml. Predicted molecular weight ~42 kDa.