

Datasheet for ABIN5708268
anti-PSD antibody



[Go to Product page](#)

1 Image

Overview

| | |
|--------------|------------------------------|
| Quantity: | 100 µg |
| Target: | PSD |
| Reactivity: | Human, Rat, Mouse |
| Host: | Rabbit |
| Clonality: | Polyclonal |
| Application: | ELISA, Western Blotting (WB) |

Product Details

| | |
|---------------|--|
| Immunogen: | A human partial recombinant protein corresponding to amino acids T536-K803 was used as the immunogen for the PSD antibody. |
| Isotype: | IgG |
| Purification: | Antigen affinity purified |

Target Details

| | |
|-------------------|---|
| Target: | PSD |
| Alternative Name: | PSD / PH and SEC7 domain-containing protein 1 (PSD Products) |
| Background: | PSD, also called EFA6A, is 63 % identical to EFA6B (PSD4) and contains a Sec7 domain adjacent to a PH domain, followed by a C-terminal coiled-coil motif. This gene is mapped to chromosome 10q24. And it encodes a Plekstrin homology and SEC7 domains-containing protein that functions as a guanine nucleotide exchange factor. The encoded protein regulates signal transduction by activating ADP-ribosylation factor 6. Alternative splicing results in |

Target Details

multiple transcript variants.

UniProt: [A5PKW4](#)

Application Details

Application Notes: Optimal dilution of the PSD antibody should be determined by the researcher. Western blot: 0.5-1 µg/mL, Direct ELISA: 0.1-0.5 µg/mL (recombinant human protein) (BSA-free format available)

Restrictions: For Research Use only

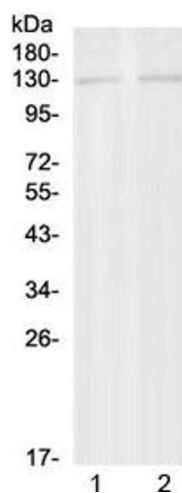
Handling

Buffer: 0.5 mg/mL if reconstituted with 0.2 mL sterile DI water

Storage: -20 °C

Storage Comment: After reconstitution, the PSD antibody can be stored for up to one month at 4°C. For long-term, aliquot and store at -20°C. Avoid repeated freezing and thawing.

Images



Western Blotting

Image 1. Western blot testing of 1) rat brain and 2) mouse brain with PSD antibody at 0.5µg/ml. Predicted molecular weight ~109 kDa.