



[Go to Product page](#)

Datasheet for ABIN5708279

anti-UBA2 antibody

5 Images

Overview

Quantity:	100 µg
Target:	UBA2
Reactivity:	Human, Mouse, Rat
Host:	Rabbit
Clonality:	Polyclonal
Application:	Western Blotting (WB), ELISA, Immunohistochemistry (Paraffin-embedded Sections) (IHC (p))

Product Details

Immunogen:	A recombinant human protein corresponding to amino acids E449-K564 was used as the immunogen for the SAE2 antibody.
Isotype:	IgG
Purification:	Antigen affinity purified

Target Details

Target:	UBA2
Alternative Name:	UBA2 / SUMO-activating enzyme subunit 2 / SAE2 (UBA2 Products)
Background:	Ubiquitin-like 1-activating enzyme E1B (UBLE1B) also known as SUMO-activating enzyme subunit 2 (SAE2) is an enzyme that in humans is encoded by the UBA2 gene. Posttranslational modification of proteins by the addition of the small protein SUMO, or sumoylation, regulates protein structure and intracellular localization. SAE1 and UBA2 form a heterodimer that functions as a SUMO-activating enzyme for the sumoylation of proteins

Target Details

UniProt: [Q9UBT2](#)

Application Details

Application Notes: Optimal dilution of the UBA2 antibody should be determined by the researcher. Western Blot: 0.5-1 µg/mL, IHC (FFPE): 1-2 µg/mL, Direct ELISA: 0.1-0.5 µg/mL

Restrictions: For Research Use only

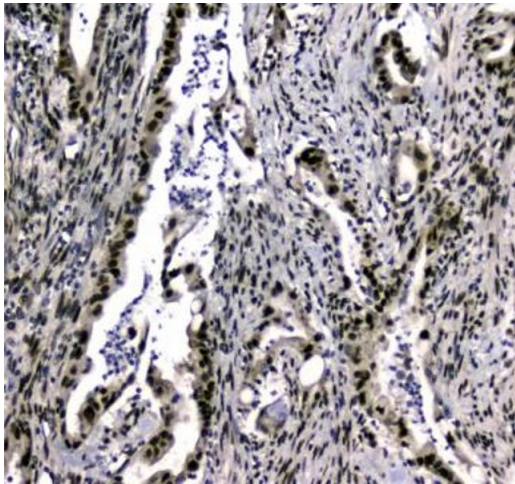
Handling

Buffer: 0.5 mg/mL if reconstituted with 0.2 mL sterile DI water

Storage: -20 °C

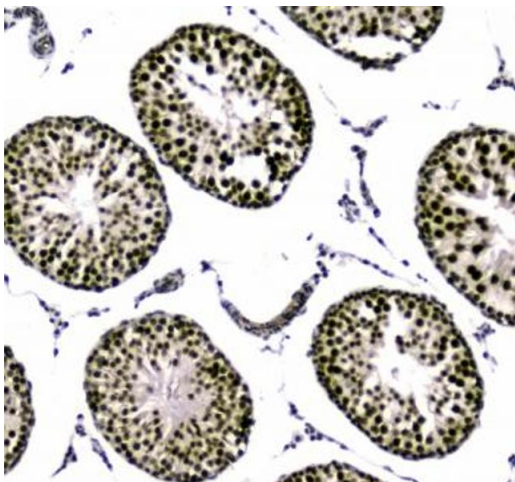
Storage Comment: After reconstitution, the UBA2 antibody can be stored for up to one month at 4°C. For long-term, aliquot and store at -20°C. Avoid repeated freezing and thawing.

Images



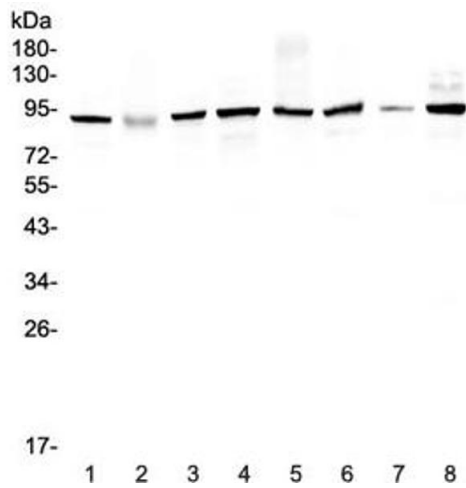
Immunohistochemistry

Image 1. IHC testing of FFPE rat testis tissue with UBA2 antibody at 1ug/ml. Required HIER: steam section in pH6 citrate buffer for 20 min and allow to cool prior to staining.



Immunohistochemistry

Image 2. IHC testing of FFPE human breast cancer tissue with UBA2 antibody at 1ug/ml. Required HIER: steam section in pH6 citrate buffer for 20 min and allow to cool prior to staining.



Western Blotting

Image 3. Western blot testing of human 1) HeLa 2) placenta, 3) MCF7, 4) A549, 5) SK-OV-3, 6) 22RV1, 7) A431 and 8) COLO320 lysate with UBA2 antibody at 0.5ug/ml. Predicted molecular weight: ~72 kDa but routinely observed at ~90 kDa.

Please check the [product details page](#) for more images. Overall 5 images are available for ABIN5708279.