

Datasheet for ABIN570831

anti-SPAG16 antibody (Internal Region)[Go to Product page](#)**1** Image

Overview

Quantity:	100 µg
Target:	SPAG16
Binding Specificity:	Internal Region
Reactivity:	Human
Host:	Goat
Clonality:	Polyclonal
Conjugate:	This SPAG16 antibody is un-conjugated
Application:	Immunohistochemistry (IHC), ELISA

Product Details

Purpose:	SPAG16
Immunogen:	C-KLHYASYEPTIR
Sequence:	KLHYASYEPT IR
Isotype:	IgG
Specificity:	This antibody is expected to recognize isoform 1 (NP_078808.3) only.
Cross-Reactivity:	Cow, Dog, Human, Mouse
Purification:	Purified from goat serum by ammonium sulphate precipitation followed by antigen affinity chromatography using the immunizing peptide.
Grade:	Verified

Target Details

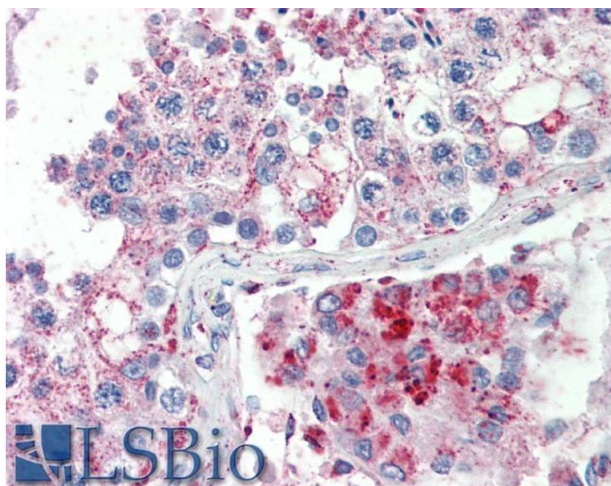
Target:	SPAG16
Alternative Name:	SPAG16 (SPAG16 Products)
Background:	SPAG16, sperm associated antigen 16, DKFZp666P1710, FLJ22724, FLJ37717, MGC87036, PF20, WDR29, WD repeat domain 29, sperm-associated WD repeat protein
Gene ID:	79582, 66722
NCBI Accession:	NP_078808

Application Details

Application Notes:	<p>Immunohistochemistry: Paraffin embedded Human Testis. Recommended concentration: 5 µg/mL.</p> <p>Western Blot: Preliminary experiments gave bands at approx 55 kDa and 22 kDa in Human Testis lysates after 0.3 µg/mL antibody staining. Please note that currently we cannot find an explanation in the literature for the bands we observe given the calculated</p> <p>Peptide ELISA: antibody detection limit dilution 1:32000.</p>
Restrictions:	For Research Use only

Handling

Format:	Liquid
Concentration:	0.5 mg/mL
Buffer:	Supplied at 0.5 mg/mL in Tris saline, 0.02 % sodium azide, pH 7.3 with 0.5 % bovine serum albumin.
Preservative:	Sodium azide
Precaution of Use:	This product contains Sodium azide: a POISONOUS AND HAZARDOUS SUBSTANCE which should be handled by trained staff only.
Handling Advice:	Minimize freezing and thawing.
Storage:	-20 °C
Storage Comment:	Aliquot and store at -20°C, with minimal freeze/thawing. A working aliquot may be refrigerated at 4°C for a few weeks and still remain viable.



Immunohistochemistry

Image 1. ABIN570831 (5µg/ml) staining of paraffin embedded Human Testis. Steamed antigen retrieval with citrate buffer pH 6, AP-staining.