

Datasheet for ABIN570832  
**anti-SPAG16 antibody (AA 139-152)**[Go to Product page](#)

## 2 Images

## Overview

Quantity:	100 µg
Target:	SPAG16
Binding Specificity:	AA 139-152
Reactivity:	Human, Mouse
Host:	Goat
Clonality:	Polyclonal
Conjugate:	This SPAG16 antibody is un-conjugated
Application:	ELISA, Immunohistochemistry (IHC), Immunofluorescence (IF), Flow Cytometry (FACS)

## Product Details

Purpose:	SPAG16 (aa139-152)
Immunogen:	C-KGVTELRTVGNVPD
Sequence:	KGVTELRTVG NVPD
Isotype:	IgG
Specificity:	This antibody is expected to recognize isoform 1 and 2 (NP_078808.3, NP_001020607.1).
Cross-Reactivity:	Cow, Dog, Human
Purification:	Purified from goat serum by ammonium sulphate precipitation followed by antigen affinity chromatography using the immunizing peptide.
Grade:	Verified

## Target Details

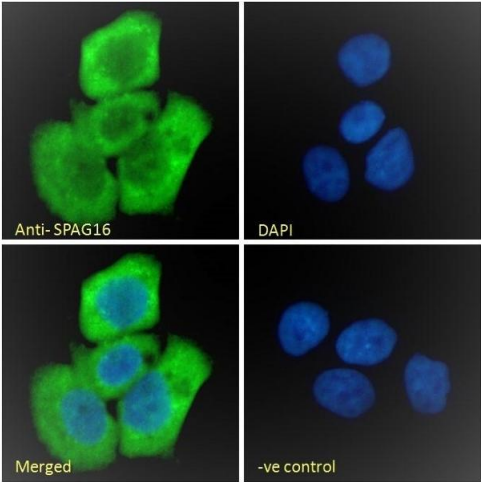
Target:	SPAG16
Alternative Name:	SPAG16 ( <a href="#">SPAG16 Products</a> )
Background:	SPAG16, sperm associated antigen 16, DKFZp666P1710, FLJ22724, FLJ37717, MGC87036, PF20, WDR29, WD repeat domain 29, sperm-associated WD repeat protein
Gene ID:	79582
NCBI Accession:	<a href="#">NP_078808</a> , <a href="#">NP_001020607</a>

## Application Details

Application Notes:	Immunohistochemistry: This antibody was successfully used in Human and Murine frozen Brain sections (PMID: 25086173). Peptide ELISA: antibody detection limit dilution 1:16000.
Comment:	<b>Immunofluorescence:</b> Strong expression of the protein seen in the cytoplasm of A431 cells. Recommended concentration: 10µg/ml. <b>Flow Cytometry:</b> Flow cytometric analysis of A431 cells. Recommended concentration: 10ug/ml.<
Restrictions:	For Research Use only

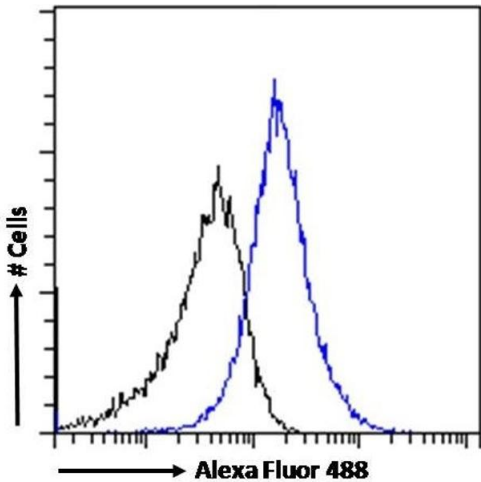
## Handling

Format:	Liquid
Concentration:	0.5 mg/mL
Buffer:	Supplied at 0.5 mg/mL in Tris saline, 0.02 % sodium azide, pH 7.3 with 0.5 % bovine serum albumin.
Preservative:	Sodium azide
Precaution of Use:	This product contains Sodium azide: a POISONOUS AND HAZARDOUS SUBSTANCE which should be handled by trained staff only.
Handling Advice:	Minimize freezing and thawing.
Storage:	-20 °C
Storage Comment:	Aliquot and store at -20°C, with minimal freeze/thawing. A working aliquot may be refrigerated at 4°C for a few weeks and still remain viable.



Immunofluorescence

**Image 1.** (ABIN570832) Immunofluorescence analysis of paraformaldehyde fixed A431 cells, permeabilized with 0.15 % Triton. Primary incubation 1hr (10 µg/mL) followed by Alexa Fluor 488 secondary antibody (2 µg/mL), showing cytoplasmic staining. The nuclear stain is DAPI (b



Flow Cytometry

**Image 2.** (ABIN570832) Flow cytometric analysis of paraformaldehyde fixed A431 cells (blue line), permeabilized with 0.5 % Triton. Primary incubation 1hr (10 µg/mL) followed by Alexa Fluor 488 secondary antibody (1 µg/mL). IgG control: Unimmunized goat IgG (black line) fol