

Datasheet for ABIN5708326

**anti-CPA antibody**[Go to Product page](#)**1** Image

## Overview

Quantity:	100 µg
Target:	CPA
Reactivity:	Mouse, Rat
Host:	Rabbit
Clonality:	Polyclonal
Conjugate:	This CPA antibody is un-conjugated
Application:	Western Blotting (WB)

## Product Details

Immunogen:	Amino acids KRPAIWIDTGIHSREWVTQASGVWFakkITQDYGQDAaftailDTLD from the human protein were used as the immunogen for the Carboxypeptidase A antibody.
Isotype:	IgG
Cross-Reactivity (Details):	Expected species reactivity: Human
Purification:	Antigen affinity purified

## Target Details

Target:	CPA
Alternative Name:	Carboxypeptidase A ( <a href="#">CPA Products</a> )
Background:	Carboxypeptidase A1 is an enzyme that in humans is encoded by the CPA1 gene. This gene encodes a member of the carboxypeptidase A family of zinc metalloproteases. This enzyme is produced in the pancreas and preferentially cleaves C-terminal branched-chain and aromatic

## Target Details

amino acids from dietary proteins. This gene and several family members are present in a gene cluster on chromosome 7. Mutations in this gene may be linked to chronic pancreatitis, while elevated protein levels may be associated with pancreatic cancer.

UniProt: [P15085](#)

## Application Details

Application Notes: Optimal dilution of the Carboxypeptidase A antibody should be determined by the researcher.\.  
Western Blot: 0.5-1 µg/mL

Restrictions: For Research Use only

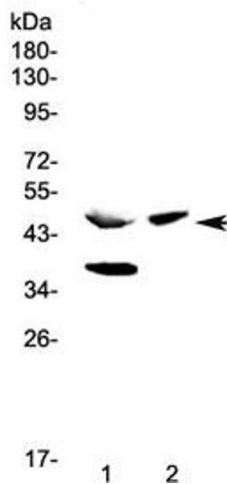
## Handling

Buffer: 0.5 mg/mL if reconstituted with 0.2 mL sterile DI water

Storage: -20 °C

Storage Comment: After reconstitution, the Carboxypeptidase A antibody can be stored for up to one month at 4°C. For long-term, aliquot and store at -20°C. Avoid repeated freezing and thawing.

## Images



### Western Blotting

**Image 1.** Western blot testing of 1) rat pancreas and 2) mouse pancreas lysate with Carboxypeptidase A antibody at 0.5ug/ml. Predicted molecular weight ~47 kDa.