

Datasheet for ABIN5708327

## anti-XCL1 antibody



[Go to Product page](#)

### 1 Image

#### Overview

Quantity:	100 µg
Target:	XCL1
Reactivity:	Mouse, Rat
Host:	Rabbit
Clonality:	Polyclonal
Conjugate:	This XCL1 antibody is un-conjugated
Application:	Western Blotting (WB), ELISA

#### Product Details

Immunogen:	A mouse partial recombinant protein corresponding to amino acids V22-G114 was used as the immunogen for the Lymphotactin antibody.
Isotype:	IgG
Purification:	Antigen affinity purified

#### Target Details

Target:	XCL1
Alternative Name:	Lymphotactin / XCL1 ( <a href="#">XCL1 Products</a> )
Background:	Chemokine (C motif) ligand (XCL1) is a small cytokine belonging to the XC chemokine family that is also known as lymphotactin. Muller et al. (1995) mapped the gene to chromosome 1q23 by FISH. The sequence of the deduced 114-amino acid protein is most homologous to the CC chemokines CCL8 and CCL3. It is found in high levels in spleen, thymus, intestine and peripheral

## Target Details

blood leukocytes, and at lower levels in lung, prostate gland and ovary. XCL1 induces the migration of cells expressing XCR1.

UniProt: [P47993](#)

Pathways: [Regulation of Leukocyte Mediated Immunity](#), [Positive Regulation of Immune Effector Process](#), [Production of Molecular Mediator of Immune Response](#), [Activated T Cell Proliferation](#)

## Application Details

Application Notes: Optimal dilution of the Lymphotactin antibody should be determined by the researcher.\n\nWestern blot: 0.5-1 µg/mL, Direct ELISA: 0.1-0.5 µg/mL (recombinant mouse protein) (BSA-free format available)

Restrictions: For Research Use only

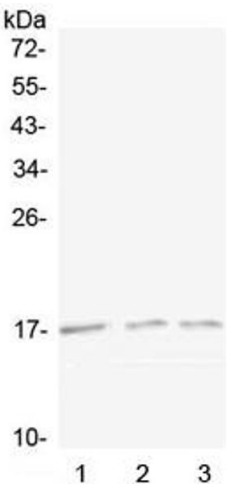
## Handling

Buffer: 0.5 mg/mL if reconstituted with 0.2 mL sterile DI water

Storage: -20 °C

Storage Comment: After reconstitution, the Lymphotactin antibody can be stored for up to one month at 4°C. For long-term, aliquot and store at -20°C. Avoid repeated freezing and thawing.

## Images



### Western Blotting

**Image 1.** Western blot testing of 1) mouse spleen, 2) mouse kidney and 3) rat kidney lysate with Lymphotactin antibody at 0.5ug/ml. Predicted molecular weight ~13 kDa, can be observed at 15-20 kDa.