

Datasheet for ABIN570834

anti-Homeobox D13 antibody (Internal Region)**3** Images[Go to Product page](#)

Overview

Quantity:	100 µg
Target:	Homeobox D13 (HOXD13)
Binding Specificity:	Internal Region
Reactivity:	Human
Host:	Goat
Clonality:	Polyclonal
Conjugate:	This Homeobox D13 antibody is un-conjugated
Application:	ELISA, Immunohistochemistry (IHC), Immunofluorescence (IF)

Product Details

Purpose:	HOXD13
Immunogen:	Peptide with sequence C-KSSFPGDVALNQPD, from the internal region of the protein sequence according to NP_000514.2.
Sequence:	KSSFPGDVAL NQPD
Isotype:	IgG
Cross-Reactivity:	Cow, Human, Mouse, Rat
Purification:	Purified from goat serum by ammonium sulphate precipitation followed by antigen affinity chromatography using the immunizing peptide.
Grade:	Verified

Target Details

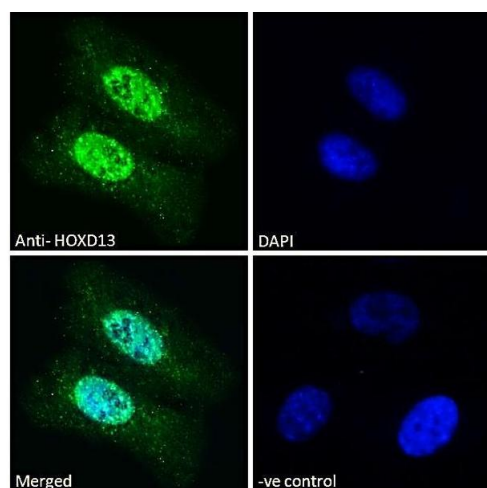
Target:	Homeobox D13 (HOXD13)
Alternative Name:	HOXD13 (HOXD13 Products)
Background:	HOXD13, homeobox D13, BDE, BDSD, HOX4l, SPD, homeo box 4l, homeo box D13
Gene ID:	3239, 15433, 288154
NCBI Accession:	NP_000514
Pathways:	Synaptic Membrane

Application Details

Application Notes:	Immunohistochemistry: In paraffin embedded Human Prostate shows nuclear staining in the secretory cells. Recommended concentration, 1-2 µg/mL. Peptide ELISA: antibody detection limit dilution 1:8000.
Comment:	Immunofluorescence: Strong expression of the protein seen in the nucleus of HEK293 and U2OS cells. Recommended concentration: 10µg/ml.
Restrictions:	For Research Use only

Handling

Format:	Liquid
Concentration:	0.5 mg/mL
Buffer:	Supplied at 0.5 mg/mL in Tris saline, 0.02 % sodium azide, pH 7.3 with 0.5 % bovine serum albumin.
Preservative:	Sodium azide
Precaution of Use:	This product contains Sodium azide: a POISONOUS AND HAZARDOUS SUBSTANCE which should be handled by trained staff only.
Handling Advice:	Minimize freezing and thawing.
Storage:	-20 °C
Storage Comment:	Aliquot and store at -20°C, with minimal freeze/thawing. A working aliquot may be refrigerated at 4°C for a few weeks and still remain viable.



Immunofluorescence

Image 1. ABIN570834 Immunofluorescence analysis of paraformaldehyde fixed U2OS cells, permeabilized with 0.15% Triton. Primary incubation 1hr (10ug/ml) followed by Alexa Fluor 488 secondary antibody (2ug/ml), showing nuclear staining. The nuclear stain is DAPI (blue). Negative control: Unimmunized goat IgG (10ug/ml) followed by Alexa Fluor 488 secondary antibody (2ug/ml).

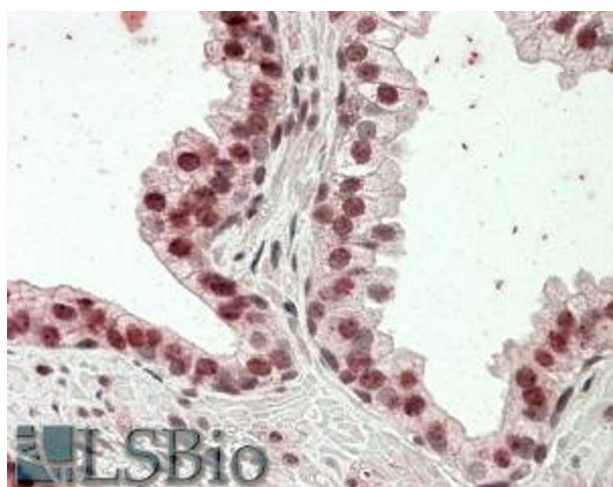
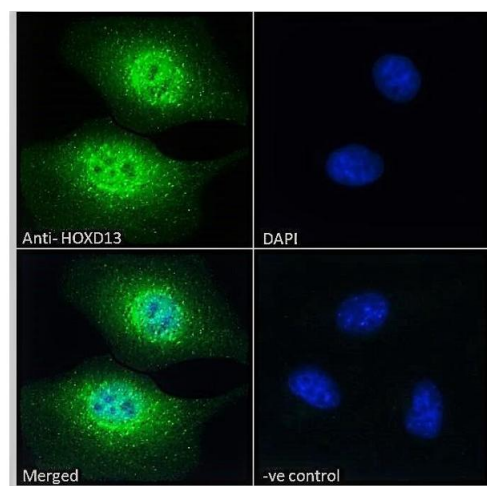


Image 2. ABIN570834 (3.8 µg/mL) staining of paraffin embedded Human Prostate. Steamed antigen retrieval with citrate buffer pH 6, AP-staining.



Immunofluorescence

Image 3. ABIN570834 Immunofluorescence analysis of paraformaldehyde fixed HEK293 cells, permeabilized with 0.15% Triton. Primary incubation 1hr (10ug/ml) followed by Alexa Fluor 488 secondary antibody (2ug/ml), showing strong nuclear and weak cytoplasmic staining. The nuclear stain is DAPI (blue). Negative control: Unimmunized goat IgG (10ug/ml) followed by Alexa Fluor 488 secondary antibody (2ug/ml).