

Datasheet for ABIN570835
anti-BOD1 antibody (Internal Region)[Go to Product page](#)

1 Image

Overview

Quantity:	100 µg
Target:	BOD1
Binding Specificity:	Internal Region
Reactivity:	Human
Host:	Goat
Clonality:	Polyclonal
Conjugate:	This BOD1 antibody is un-conjugated
Application:	ELISA, Immunohistochemistry (IHC)

Product Details

Purpose:	BOD1
Immunogen:	Peptide with sequence C-NFVSTHLDKQE, from the internal region of the protein sequence according to NP_612378.1, NP_001153123.1.
Sequence:	NFVSTHLDKQ E
Isotype:	IgG
Specificity:	This antibody is expected to recognize isoforms a and b (NP_612378.1, NP_001153123.1).
Cross-Reactivity:	Dog, Human, Mouse, Rat
Purification:	Purified from goat serum by ammonium sulphate precipitation followed by antigen affinity chromatography using the immunizing peptide.
Grade:	Verified

Target Details

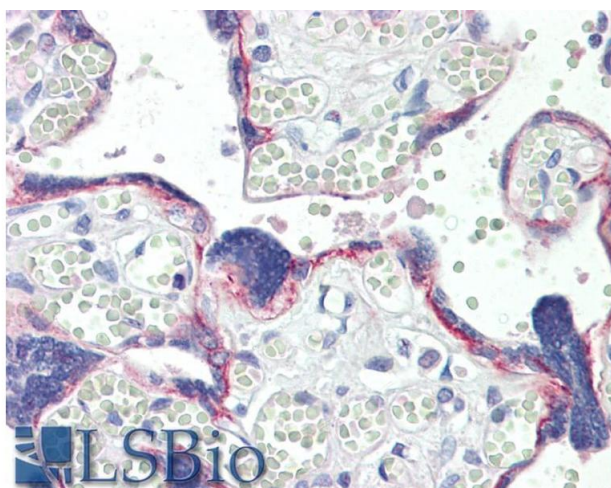
Target:	BOD1
Alternative Name:	BOD1 (BOD1 Products)
Background:	BOD1, biorientation of chromosomes in cell division 1, FAM44B, biorientation defective 1, family with sequence similarity 44, member B
Gene ID:	91272, 69556, 287173
NCBI Accession:	NP_612378 , NP_001153123

Application Details

Application Notes:	Immunohistochemistry: Paraffin embedded Human Placenta. Recommended concentration: 10 µg/mL. Western Blot: Preliminary experiments gave an approx 37 kDa band in Human Lung and Testis lysates after 1 µg/mL antibody staining. Please note that currently we cannot find an explanation in the literature for the band we observe given the calculated size Peptide ELISA: antibody detection limit dilution 1:16000.
Restrictions:	For Research Use only

Handling

Format:	Liquid
Concentration:	0.5 mg/mL
Buffer:	Supplied at 0.5 mg/mL in Tris saline, 0.02 % sodium azide, pH 7.3 with 0.5 % bovine serum albumin.
Preservative:	Sodium azide
Precaution of Use:	This product contains Sodium azide: a POISONOUS AND HAZARDOUS SUBSTANCE which should be handled by trained staff only.
Handling Advice:	Minimize freezing and thawing.
Storage:	-20 °C
Storage Comment:	Aliquot and store at -20°C, with minimal freeze/thawing. A working aliquot may be refrigerated at 4°C for a few weeks and still remain viable.



Immunohistochemistry

Image 1. ABIN570835 (10µg/ml) staining of paraffin embedded Human Placenta. Steamed antigen retrieval with citrate buffer pH 6, AP-staining.