

Datasheet for ABIN5708390

anti-IDE antibody[Go to Product page](#)

4 Images

Overview

Quantity:	100 µg
Target:	IDE
Reactivity:	Human, Mouse, Rat
Host:	Rabbit
Clonality:	Polyclonal
Application:	Western Blotting (WB), ELISA, Immunohistochemistry (Paraffin-embedded Sections) (IHC (p)), Flow Cytometry (FACS)

Product Details

Immunogen:	A recombinant human protein corresponding to amino acids F485-K756 was used as the immunogen for the IDE antibody.
Isotype:	IgG
Purification:	Antigen affinity purified

Target Details

Target:	IDE
Alternative Name:	IDE / Insulin degrading enzyme (IDE Products)
Background:	Insulin-degrading enzyme, also known as IDE, is an enzyme. This gene encodes a zinc metallopeptidase that degrades intracellular insulin, and thereby terminates insulins activity, as well as participating in intercellular peptide signalling by degrading diverse peptides such as glucagon, amylin, bradykinin, and kallidin. The preferential affinity of this enzyme for insulin

Target Details

results in insulin-mediated inhibition of the degradation of other peptides such as beta-amyloid. Deficiencies in this protein's function are associated with Alzheimer's disease and type 2 diabetes mellitus but mutations in this gene have not been shown to be causative for these diseases. This protein localizes primarily to the cytoplasm but in some cell types localizes to the extracellular space, cell membrane, peroxisome, and mitochondrion. Alternative splicing results in multiple transcript variants encoding distinct isoforms.

UniProt: [P14735](#)

Pathways: [SARS-CoV-2 Protein Interactome](#)

Application Details

Application Notes: Optimal dilution of the IDE antibody should be determined by the researcher.\. Western blot: 0.1-0.5 µg/mL, IHC (FFPE): 0.5-1 µg/mL, FACS: 1-3 µg/10⁶ cells, Direct ELISA: 0.1-0.5 µg/mL

Restrictions: For Research Use only

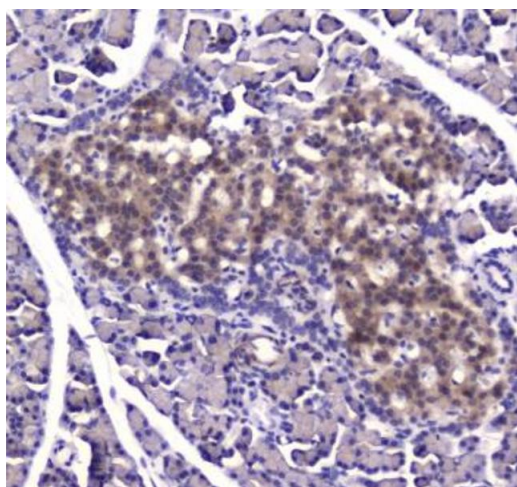
Handling

Buffer: 0.5 mg/mL if reconstituted with 0.2 mL sterile DI water

Storage: -20 °C

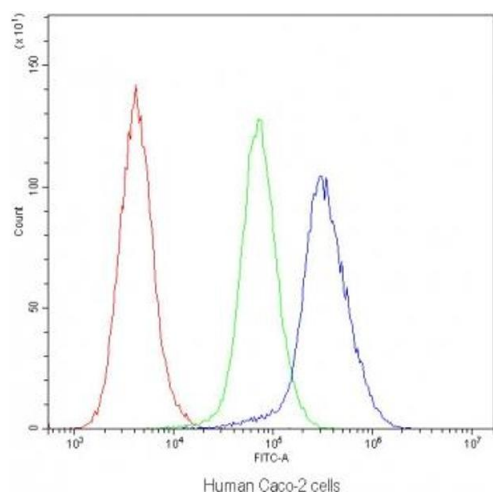
Storage Comment: After reconstitution, the IDE antibody can be stored for up to one month at 4°C. For long-term, aliquot and store at -20°C. Avoid repeated freezing and thawing.

Images



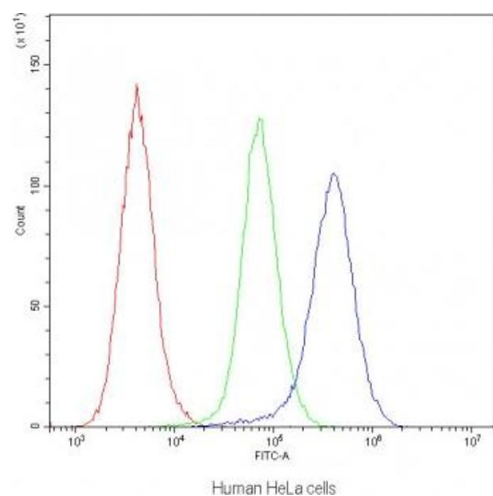
Immunohistochemistry

Image 1. IHC testing of FFPE rat pancreas tissue with IDE antibody at 1ug/ml. Required HIER: steam section in pH6 citrate buffer for 20 min and allow to cool prior to staining.



Flow Cytometry

Image 2. Flow cytometry testing of human Caco-2 cells with IDE antibody at 1ug/10⁶ cells (blocked with goat sera)



Flow Cytometry

Image 3. Flow cytometry testing of human HeLa cells with IDE antibody at 1ug/10⁶ cells (blocked with goat sera)

Please check the [product details page](#) for more images. Overall 4 images are available for ABIN5708390.