

Datasheet for ABIN570842

anti-ARMS2 antibody (Internal Region)[Go to Product page](#)**1** Image

Overview

Quantity:	100 µg
Target:	ARMS2
Binding Specificity:	Internal Region
Reactivity:	Human
Host:	Goat
Clonality:	Polyclonal
Conjugate:	This ARMS2 antibody is un-conjugated
Application:	ELISA, Immunohistochemistry (IHC)

Product Details

Purpose:	ARMS2
Immunogen:	C-EGASDKQRSK
Sequence:	EGASDKQRSK
Isotype:	IgG
Cross-Reactivity:	Human
Purification:	Purified from goat serum by ammonium sulphate precipitation followed by antigen affinity chromatography using the immunizing peptide.
Grade:	Verified

Target Details

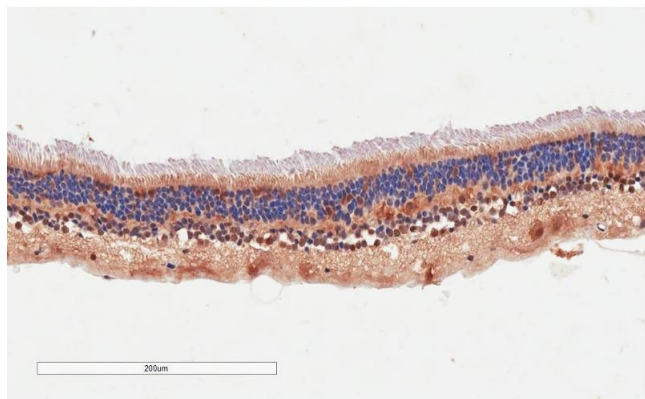
Target:	ARMS2
Alternative Name:	ARMS2 (ARMS2 Products)
Background:	ARMS2, age-related maculopathy susceptibility 2, ARMD8
Gene ID:	387715
NCBI Accession:	NP_001093137

Application Details

Application Notes:	<p>Immunohistochemistry: In paraffin embedded Human Retina shows cytoplasm staining throughout. Recommended concentration: 2-4 µg/mL.</p> <p>Western Blot: Not yet tested - our routinely used western blotting protocol does not allow detection of proteins as small as the calculated size of 11.4 kDa according to NP_001093137.1. Therefore we cannot recommend an optimal concentration.</p> <p>Peptide ELISA: antibody detection limit dilution 1:4000.</p>
Restrictions:	For Research Use only

Handling

Format:	Liquid
Concentration:	0.5 mg/mL
Buffer:	Supplied at 0.5 mg/mL in Tris saline, 0.02 % sodium azide, pH 7.3 with 0.5 % bovine serum albumin.
Preservative:	Sodium azide
Precaution of Use:	This product contains Sodium azide: a POISONOUS AND HAZARDOUS SUBSTANCE which should be handled by trained staff only.
Handling Advice:	Minimize freezing and thawing.
Storage:	-20 °C
Storage Comment:	Aliquot and store at -20°C, with minimal freeze/thawing. A working aliquot may be refrigerated at 4°C for a few weeks and still remain viable.



Immunohistochemistry

Image 1. ABIN570842 (4µg/ml) staining of paraffin embedded Human Retina. Microwaved antigen retrieval with citrate buffer pH 6, HRP-staining.