

Datasheet for ABIN570849
anti-CETP antibody (N-Term)

2 Images

[Go to Product page](#)

Overview

Quantity:	100 µg
Target:	CETP
Binding Specificity:	N-Term
Reactivity:	Human
Host:	Goat
Clonality:	Polyclonal
Conjugate:	This CETP antibody is un-conjugated
Application:	Western Blotting (WB), ELISA

Product Details

Purpose:	CETP
Immunogen:	Peptide with sequence GNAHACSKGTSHEA, from the N Terminus of the protein sequence according to NP_000069.2.
Sequence:	GNAHACSKGT SHEA
Isotype:	IgG
Specificity:	This antibody is expected to recognise isoform s1 and 2.
Cross-Reactivity:	Human
Purification:	Purified from goat serum by ammonium sulphate precipitation followed by antigen affinity chromatography using the immunizing peptide.
Grade:	Verified

Target Details

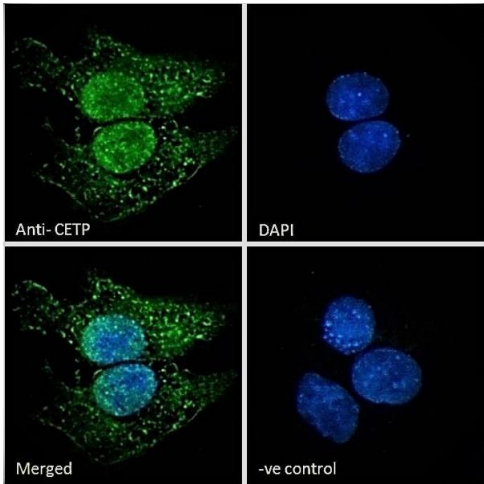
Target:	CETP
Alternative Name:	CETP (CETP Products)
Background:	CETP, cholesteryl ester transfer protein, plasma, HDLCQ10, lipid transfer protein
Gene ID:	1071
NCBI Accession:	NP_000069

Application Details

Application Notes:	Western Blot: Approx 48 kDa band observed in lysates of cell line HepG2 (calculated MW of 47.9 kDa according to NP_001273014.1. Recommended concentration: 0.3-1 µg/mL. Primary incubation 1 hour at room temperature. Negative Control: CaCo-2 Peptide ELISA: antibody detection limit dilution 1:64000.
Restrictions:	For Research Use only

Handling

Format:	Liquid
Concentration:	0.5 mg/mL
Buffer:	Supplied at 0.5 mg/mL in Tris saline, 0.02 % sodium azide, pH 7.3 with 0.5 % bovine serum albumin.
Preservative:	Sodium azide
Precaution of Use:	This product contains Sodium azide: a POISONOUS AND HAZARDOUS SUBSTANCE which should be handled by trained staff only.
Handling Advice:	Minimize freezing and thawing.
Storage:	-20 °C
Storage Comment:	Aliquot and store at -20°C, with minimal freeze/thawing. A working aliquot may be refrigerated at 4°C for a few weeks and still remain viable.



Immunofluorescence

Image 1. (ABIN570849) Immunofluorescence analysis of paraformaldehyde fixed HepG2 cells, permeabilized with 0.15 % Triton. Primary incubation 1hr (10 µg/mL) followed by Alexa Fluor 488 secondary antibody (2 µg/mL), showing nuclear and mitochondria/ cytoplasmic staining. T



Western Blotting

Image 2. (ABIN570849) (0.3 µg/mL) staining of HepG2 cell lysate (A) and Negative control Caco-2 cell lysate (B) (35 µg protein in RIPA buffer). Detected by chemiluminescence.