

Datasheet for ABIN5708506
anti-MKS1 antibody (N-Term)



[Go to Product page](#)

1 Image

Overview

Quantity:	0.05 mL
Target:	MKS1
Binding Specificity:	AA 90-124, N-Term
Reactivity:	Human
Host:	Rabbit
Clonality:	Polyclonal
Conjugate:	This MKS1 antibody is un-conjugated
Application:	Western Blotting (WB)

Product Details

Immunogen:	A portion of amino acids 90-124 from human MKS1 was used as the immunogen for the MKS1 antibody.
Isotype:	Ig Fraction
Purification:	Antigen affinity purified

Target Details

Target:	MKS1
Alternative Name:	MKS1 / Meckel syndrome type 1 protein (MKS1 Products)
Background:	Component of the tectonic-like complex, a complex localized at the transition zone of primary cilia and acting as a barrier that prevents diffusion of transmembrane proteins between the cilia and plasma membranes. Involved in centrosome migration to the apical cell surface during

Target Details

early ciliogenesis. Required for ciliary structure and function, including a role in regulating length and appropriate number through modulating centrosome duplication. Required for cell branching morphology.

UniProt: [Q9NXB0](#)

Application Details

Application Notes: The stated application concentrations are suggested starting points. Titration of the MKS1 antibody may be required due to differences in protocols and secondary/substrate sensitivity.\.
WB: 1:1000-1:2000

Restrictions: For Research Use only

Handling

Buffer: In 1X PBS, pH 7.4, with 0.09 % sodium azide

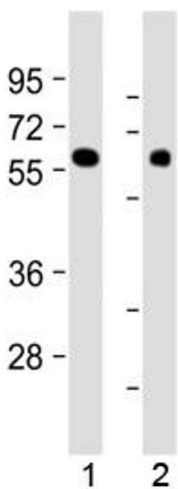
Preservative: Sodium azide

Precaution of Use: This product contains Sodium azide: a POISONOUS AND HAZARDOUS SUBSTANCE which should be handled by trained staff only.

Storage: -20 °C

Storage Comment: Aliquot the MKS1 antibody and store frozen at -20°C or colder. Avoid repeated freeze-thaw cycles.

Images



Western Blotting

Image 1. Western blot testing of human 1) kidney and 2) lung tissue lysate with MKS1 antibody at 1:2000. Predicted molecular weight ~65 kDa.