

Datasheet for ABIN570861  
**anti-NIPBL antibody (AA 889-902)**

## 3 Images

[Go to Product page](#)

## Overview

Quantity:	100 µg
Target:	NIPBL
Binding Specificity:	AA 889-902
Reactivity:	Human
Host:	Goat
Clonality:	Polyclonal
Conjugate:	This NIPBL antibody is un-conjugated
Application:	ELISA, Immunohistochemistry (IHC), Immunofluorescence (IF)

## Product Details

Purpose:	NIPBL (aa889-902)
Immunogen:	Peptide with sequence C-RPDSPRVKQGDSNK, from the internal region of the protein sequence according to NP_597677.2, NP_056199.2.
Sequence:	RPDSPRVKQG DSNK
Isotype:	IgG
Specificity:	This antibody is expected to recognize both reported isoforms (NP_597677.2, NP_056199.2).
Cross-Reactivity:	Cow, Dog, Human, Mouse, Rat
Purification:	Purified from goat serum by ammonium sulphate precipitation followed by antigen affinity chromatography using the immunizing peptide.
Grade:	Verified

## Target Details

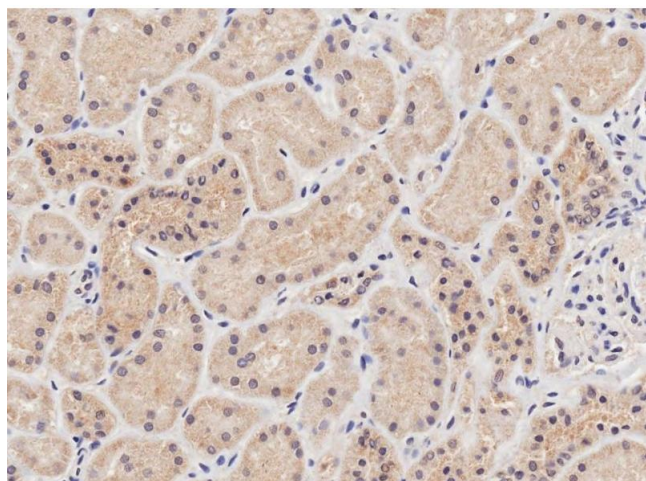
Target:	NIPBL
Alternative Name:	NIPBL ( <a href="#">NIPBL Products</a> )
Background:	NIPBL, Nipped-B homolog (Drosophila), CDLS, CDLS1, DKFZp434L1319, FLJ11203, FLJ12597, FLJ13354, FLJ13648, FLJ44854, IDN3, IDN3-B, Scc2, SCC2 homolog, delangin, nipped-B-like, sister chromatid cohesion 2 homolog
Gene ID:	25836, 71175, 294787
NCBI Accession:	<a href="#">NP_597677</a> , <a href="#">NP_056199</a>
Pathways:	<a href="#">Sensory Perception of Sound</a> , <a href="#">Stem Cell Maintenance</a>

## Application Details

Application Notes:	Immunohistochemistry: Paraffin embedded Human Kidney. Recommended concentration: 2 µg/mL. Peptide ELISA: antibody detection limit dilution 1:32000.
Comment:	<b>Immunofluorescence:</b> Strong expression of the protein seen in the cytoplasm and nuclei of HeLa cells. Recommended concentration: 10µg/ml.
Restrictions:	For Research Use only

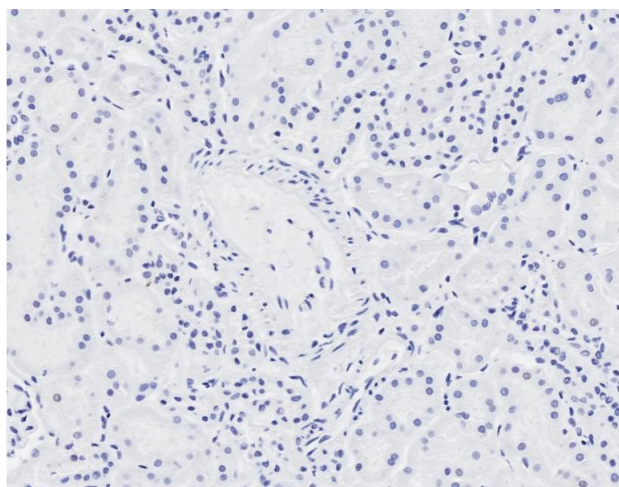
## Handling

Format:	Liquid
Concentration:	0.5 mg/mL
Buffer:	Supplied at 0.5 mg/mL in Tris saline, 0.02 % sodium azide, pH 7.3 with 0.5 % bovine serum albumin.
Preservative:	Sodium azide
Precaution of Use:	This product contains Sodium azide: a POISONOUS AND HAZARDOUS SUBSTANCE which should be handled by trained staff only.
Handling Advice:	Minimize freezing and thawing.
Storage:	-20 °C
Storage Comment:	Aliquot and store at -20°C, with minimal freeze/thawing. A working aliquot may be refrigerated at 4°C for a few weeks and still remain viable.



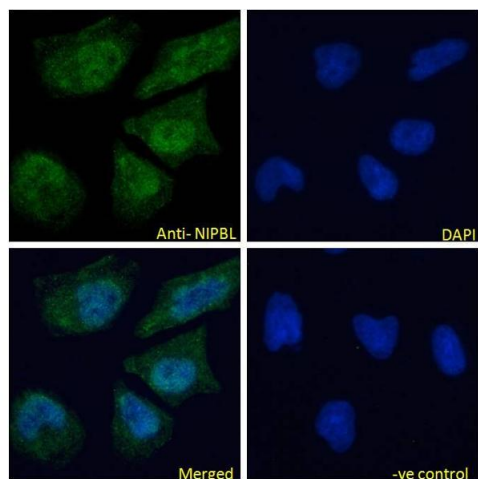
#### Immunohistochemistry

**Image 1.** ABIN570861 (2µg/ml) staining of paraffin embedded Human Kidney. Microwaved antigen retrieval with citrate buffer pH 6, HRP-staining.



#### Immunohistochemistry

**Image 2.** ABIN570861 Negative Control showing staining of paraffin embedded Human Cerebellum, with no primary antibody.



#### Immunofluorescence

**Image 3.** ABIN570861 Immunofluorescence analysis of paraformaldehyde fixed HeLa cells, permeabilized with 0.15% Triton. Primary incubation 1hr (10ug/ml) followed by Alexa Fluor 488 secondary antibody (4ug/ml), showing nuclear and cytoplasmic staining. The nuclear stai