

Datasheet for ABIN570897
anti-ERV3 antibody (Internal Region)



[Go to Product page](#)

1 Image

Overview

Quantity:	100 µg
Target:	ERV3 (ERV3-1)
Binding Specificity:	Internal Region
Reactivity:	Human
Host:	Goat
Clonality:	Polyclonal
Conjugate:	This ERV3 antibody is un-conjugated
Application:	ELISA, Western Blotting (WB), Immunohistochemistry (IHC)

Product Details

Purpose:	ERV3
Immunogen:	C-PQDNFTLTASS
Sequence:	PQDNFTLTAS S
Isotype:	IgG
Cross-Reactivity:	Human
Purification:	Purified from goat serum by ammonium sulphate precipitation followed by antigen affinity chromatography using the immunizing peptide.
Grade:	Verified

Target Details

Target:	ERV3 (ERV3-1)
Alternative Name:	ERV3 (ERV3-1 Products)
Background:	ERV3, endogenous retroviral sequence 3 (includes zinc finger protein H-plk/HPF9), ERV-R, H-PLK, HERV-R, ERV-3 envelope protein, endogenous retroviral sequence 3, envelope polyprotein
Gene ID:	2086
NCBI Accession:	NP_001007254

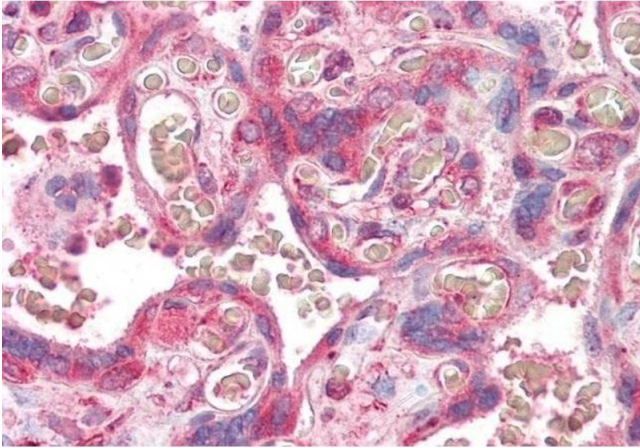
Application Details

Application Notes:	<p>Immunohistochemistry: Paraffin embedded Human Placenta. Recommended concentration: 3.75 µg/mL. This product has been successfully used in IHC on Human: Frese S et al, PLoS One. 2015 Jul 8,10(7). PMID: 26154387.</p> <p>Western Blot: This product has been successfully used in WB on Human: Nahas MR et al, Br J Haematol. 2019 May,185(4):679-690. PMID: 30828801.</p> <p>Peptide ELISA: antibody detection limit dilution 1:4000.</p>
--------------------	--

Restrictions:	For Research Use only
---------------	-----------------------

Handling

Format:	Liquid
Concentration:	0.5 mg/mL
Buffer:	Supplied at 0.5 mg/mL in Tris saline, 0.02 % sodium azide, pH 7.3 with 0.5 % bovine serum albumin.
Preservative:	Sodium azide
Precaution of Use:	This product contains Sodium azide: a POISONOUS AND HAZARDOUS SUBSTANCE which should be handled by trained staff only.
Handling Advice:	Minimize freezing and thawing.
Storage:	-20 °C
Storage Comment:	Aliquot and store at -20°C, with minimal freeze/thawing. A working aliquot may be refrigerated at 4°C for a few weeks and still remain viable.



Immunohistochemistry

Image 1. ABIN570897 (3.75 $\mu\text{g}/\text{mL}$) staining of paraffin embedded Human Placenta. Steamed antigen retrieval with citrate buffer pH 6, AP-staining.