



[Go to Product page](#)

Datasheet for ABIN5709071

Aquaporin 1 Protein (AA 220-269, partial) (His-SUMO Tag)

1 Image

Overview

Quantity:	100 µg
Target:	Aquaporin 1 (AQP1)
Protein Characteristics:	AA 220-269, partial
Origin:	Human
Source:	Escherichia coli (E. coli)
Protein Type:	Recombinant
Purification tag / Conjugate:	This Aquaporin 1 protein is labelled with His-SUMO Tag.
Application:	SDS-PAGE (SDS)

Product Details

Sequence:	GALAVLIYDF ILAPRSSDLT DRVKVWTSGQ VEEYDL DADD INSRVEMKPK
Purification:	SDS-PAGE
Purity:	> 90 %

Target Details

Target:	Aquaporin 1 (AQP1)
Alternative Name:	AQP1 (AQP1 Products)
Background:	Forms a water-specific channel that provides the plasma mbranes of red cells and kidney proximal tubules with high permeability to water, thereby permitting water to move in the direction of an osmotic gradient.

Target Details

Molecular Weight:	21.6 kDa
UniProt:	P29972
Pathways:	Hormone Transport

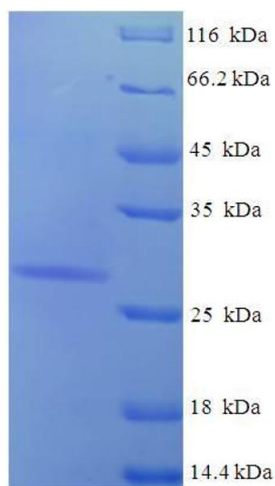
Application Details

Application Notes:	Optimal working dilution should be determined by the investigator.
Restrictions:	For Research Use only

Handling

Format:	Liquid
Concentration:	0.1-2 mg/mL
Buffer:	20 mM Tris-HCl based buffer, pH 8.0
Storage:	-80 °C,4 °C,-20 °C
Storage Comment:	Store at -20°C, for extended storage, conserve at -20°C or -80°C. Repeated freezing and thawing is not recommended. Store working aliquots at 4°C for up to one week.

Images



SDS-PAGE

Image 1.