

Datasheet for ABIN570908
anti-NOD1 antibody (C-Term)



[Go to Product page](#)

1 Image

Overview

Quantity:	100 µg
Target:	NOD1
Binding Specificity:	C-Term
Reactivity:	Human
Host:	Goat
Clonality:	Polyclonal
Conjugate:	This NOD1 antibody is un-conjugated
Application:	Western Blotting (WB), ELISA

Product Details

Purpose:	NOD1 / CARD4
Immunogen:	EAKVYEDEKRIICF
Sequence:	EAKVYEDEKR IICF
Isotype:	IgG
Cross-Reactivity:	Cow, Dog, Human, Mouse, Pig, Rat
Purification:	Purified from goat serum by ammonium sulphate precipitation followed by antigen affinity chromatography using the immunizing peptide.
Grade:	Verified

Target Details

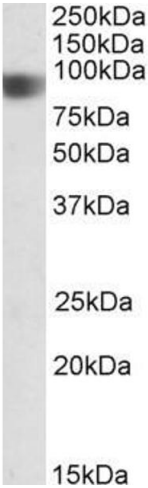
Target:	NOD1
Alternative Name:	NOD1 (NOD1 Products)
Background:	NOD1, nucleotide-binding oligomerization domain containing 1, CARD4, CLR7.1, NLRC1, NLR family, CARD domain containing 1, caspase recruitment domain family, member 4, caspase recruitment domain-containing protein 4, nucleotide-binding oligomerization doma
Gene ID:	10392
NCBI Accession:	NP_006083
Pathways:	Activation of Innate immune Response , Positive Regulation of Endopeptidase Activity , Toll-Like Receptors Cascades , Inflammasome

Application Details

Application Notes:	Western Blot: Approx 85 kDa band observed in Human Duodenum lysates (calculated MW of 107.6 kDa according to NP_006083.1). Recommended concentration: 0.5-1.5 µg/mL. Peptide ELISA: antibody detection limit dilution 1:32000.
Restrictions:	For Research Use only

Handling

Format:	Liquid
Concentration:	0.5 mg/mL
Buffer:	Supplied at 0.5 mg/mL in Tris saline, 0.02 % sodium azide, pH 7.3 with 0.5 % bovine serum albumin.
Preservative:	Sodium azide
Precaution of Use:	This product contains Sodium azide: a POISONOUS AND HAZARDOUS SUBSTANCE which should be handled by trained staff only.
Handling Advice:	Minimize freezing and thawing.
Storage:	-20 °C
Storage Comment:	Aliquot and store at -20°C, with minimal freeze/thawing. A working aliquot may be refrigerated at 4°C for a few weeks and still remain viable.



Western Blotting

Image 1. ABIN570908 (0.5µg/ml) staining of Human Duodenum lysate (35µg protein in RIPA buffer). Primary incubation was 1 hour. Detected by chemiluminescence.