

Datasheet for ABIN5709111

ATPAF2 Protein (AA 41-289) (His tag)[Go to Product page](#)**1** Image

Overview

Quantity:	100 µg
Target:	ATPAF2
Protein Characteristics:	AA 41-289
Origin:	Human
Source:	Escherichia coli (E. coli)
Protein Type:	Recombinant
Purification tag / Conjugate:	This ATPAF2 protein is labelled with His tag.
Application:	SDS-PAGE (SDS)

Product Details

Sequence:	APPTERKRFY QNVSITQEGG GFEINLDHRK LKTPQAKLFT VPSEALIAIV ATEWDSQQDT IKYYTMHLTT LCNTSLDNPT QRNKDQLIRA AVKFLDTDTI CYRVEEPETL VELQRNEWDP IIEWAEKRYG VEISSSTSIM GPSIPAKTRE VLVSHLASYN TWALQGIEFV AAQLKSMVLT LGLIDLRLTV EQAVLLSRLE EEYQIQKWGN IEWAHDYELQ ELRARTAAGT LFIHLCSEST TVKHKLLKE
Purification:	SDS-PAGE
Purity:	> 90 %

Target Details

Target:	ATPAF2
Alternative Name:	ATPF2 (ATPAF2 Products)

Target Details

Background:	May play a role in the assbly of the F1 component of the mitochondrial ATP synthase (ATPase).
Molecular Weight:	32.6 kDa
UniProt:	Q8N5M1

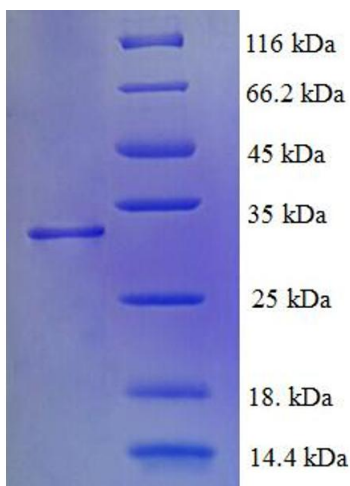
Application Details

Application Notes:	Optimal working dilution should be determined by the investigator.
Restrictions:	For Research Use only

Handling

Format:	Liquid
Concentration:	0.1-2 mg/mL
Buffer:	20 mM Tris-HCl based buffer, pH 8.0
Storage:	-80 °C,4 °C,-20 °C
Storage Comment:	Store at -20°C, for extended storage, conserve at -20°C or -80°C. Repeated freezing and thawing is not recommended. Store working aliquots at 4°C for up to one week.

Images



SDS-PAGE

Image 1.