

Datasheet for ABIN5709113

B4GALT1 Protein (AA 1-24) (GST tag)[Go to Product page](#)**1** Image

Overview

Quantity:	100 µg
Target:	B4GALT1
Protein Characteristics:	AA 1-24
Origin:	Cow
Source:	Escherichia coli (E. coli)
Protein Type:	Recombinant
Purification tag / Conjugate:	This B4GALT1 protein is labelled with GST tag.
Application:	SDS-PAGE (SDS)

Product Details

Sequence:	MKFREPLLGG SAAMPGASLQ RACR
Purification:	SDS-PAGE
Purity:	> 90 %

Target Details

Target:	B4GALT1
Alternative Name:	B4GT1 (B4GALT1 Products)
Background:	The Golgi complex form catalyzes the production of lactose in the lactating mammary gland and could also be responsible for the synthesis of complex-type N-linked oligosaccharides in many glycoproteins as well as the carbohydrate moieties of glycolipids. The cell surface form functions as a recognition molecule during a variety of cell to cell and cell to matrix interactions,

Target Details

as those occurring during development and egg fertilization, by binding to specific oligosaccharide ligands on opposing cells or in the extracellular matrix.

Molecular Weight: 29.95 kDa

UniProt: [P08037](#)

Pathways: [Glycosaminoglycan Metabolic Process](#)

Application Details

Application Notes: Optimal working dilution should be determined by the investigator.

Restrictions: For Research Use only

Handling

Format: Liquid

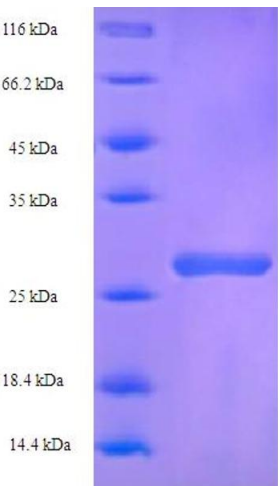
Concentration: 0.1-2 mg/mL

Buffer: 20 mM Tris-HCl based buffer, pH 8.0

Storage: -80 °C, 4 °C, -20 °C

Storage Comment: Store at -20°C, for extended storage, conserve at -20°C or -80°C. Repeated freezing and thawing is not recommended. Store working aliquots at 4°C for up to one week.

Images



SDS-PAGE

Image 1.