

Datasheet for ABIN570913
anti-SPRY1 antibody (C-Term)[Go to Product page](#)

4 Images

Overview

Quantity:	100 µg
Target:	SPRY1
Binding Specificity:	C-Term
Reactivity:	Human, Mouse
Host:	Goat
Clonality:	Polyclonal
Conjugate:	This SPRY1 antibody is un-conjugated
Application:	Western Blotting (WB), ELISA, Immunohistochemistry (IHC), Immunofluorescence (IF), Flow Cytometry (FACS)

Product Details

Purpose:	Sprouty
Immunogen:	Peptide with sequence CPSRGQGKPS, from the C Terminus of the protein sequence according to NP_005832.1, NP_955359.1.
Sequence:	CPSRGQGKPS
Isotype:	IgG
Specificity:	NP_005832.1 and NP_955359.1 represent variants of the same protein.
Cross-Reactivity:	Human
Purification:	Purified from goat serum by ammonium sulphate precipitation followed by antigen affinity chromatography using the immunizing peptide.

Product Details

Grade: Verified

Target Details

Target: SPRY1

Alternative Name: SPRY1 ([SPRY1 Products](#))

Background: SPRY1, hSPRY1, sprouty homolog 1, antagonist of FGF signaling (Drosophila), sprouty (Drosophila) homolog 1 (antagonist of FGF signaling), sprouty, Drosophila, homolog of, 1 (antagonist of FGF signaling)

Gene ID: 10252

NCBI Accession: [NP_005832](#), [NP_955359](#)

Pathways: [EGFR Signaling Pathway](#), [EGFR Downregulation](#)

Application Details

Application Notes: Immunohistochemistry: This product has been successfully used by customers in paraffin embedded Mouse Brain, showing nuclear staining. Recommended concentration: 1-3 µg/mL. Western Blot: Approx 37 kDa band observed in Human Kidney lysates (calculated MW of 35.1 kDa according to NP_005832.1). Recommended concentration: 0.3-1 µg/mL. Primary incubation 1 hour at room temperature. This product has been successfully used in ERMS Peptide ELISA: antibody detection limit dilution 1:16000.

Comment: **Immunofluorescence:** Strong expression of the protein seen in the cytoplasm and Golgi apparatus of HeLa and HepG2 cells. Recommended concentration: 10µg/ml.
Flow Cytometry: Flow cytometric analysis of HEK293 cells. Rec

Restrictions: For Research Use only

Handling

Format: Liquid

Concentration: 0.5 mg/mL

Buffer: Supplied at 0.5 mg/mL in Tris saline, 0.02 % sodium azide, pH 7.3 with 0.5 % bovine serum albumin.

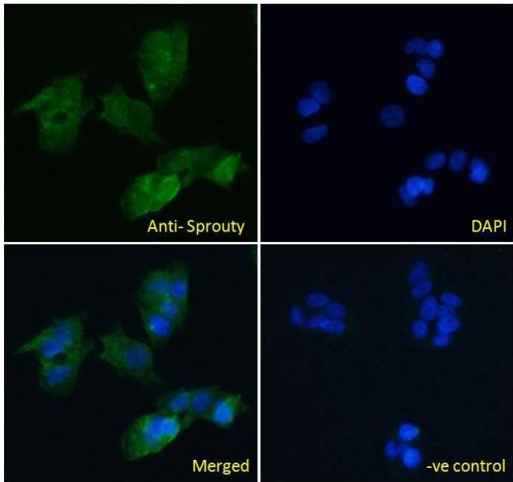
Preservative: Sodium azide

Precaution of Use: This product contains Sodium azide: a POISONOUS AND HAZARDOUS SUBSTANCE which

Handling

	should be handled by trained staff only.
Handling Advice:	Minimize freezing and thawing.
Storage:	-20 °C
Storage Comment:	Aliquot and store at -20°C, with minimal freeze/thawing. A working aliquot may be refrigerated at 4°C for a few weeks and still remain viable.

Images



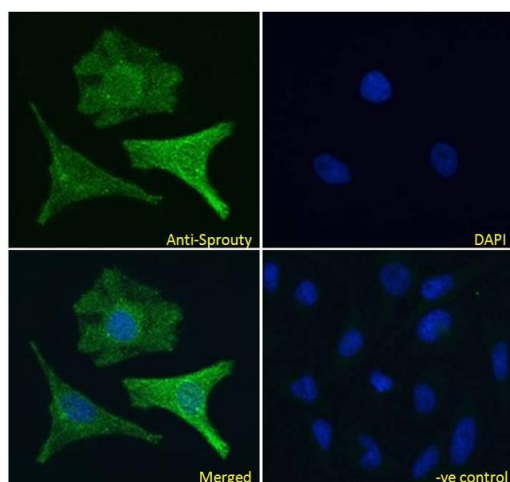
Immunofluorescence

Image 1. ABIN570913 Immunofluorescence analysis of paraformaldehyde fixed HepG2 cells, permeabilized with 0.15% Triton. Primary incubation 1hr (10ug/ml) followed by Alexa Fluor 488 secondary antibody (4ug/ml), showing cytoplasmic and Golgi apparatus staining. The nuclear stain is DAPI (blue). Negative control: Unimmunized goat IgG (10ug/ml) followed by Alexa Fluor 488 secondary antibody (2ug/ml).



Western Blotting

Image 2. ABIN570913 (0.3µg/ml) staining of Human Kidney lysate (35µg protein in RIPA buffer). Detected by chemiluminescence.



Immunofluorescence

Image 3. ABIN570913 Immunofluorescence analysis of paraformaldehyde fixed HeLa cells, permeabilized with 0.15% Triton. Primary incubation 1hr (10ug/ml) followed by Alexa Fluor 488 secondary antibody (4ug/ml), showing cytoplasmic and Golgi apparatus staining. The nuclear stain is DAPI (blue). Negative control: Unimmunized goat IgG (10ug/ml) followed by Alexa Fluor 488 secondary antibody (2ug/ml).

Please check the [product details page](#) for more images. Overall 4 images are available for ABIN570913.