



[Go to Product page](#)

Datasheet for ABIN5709163

C1QA Protein (AA 23-245) (His-SUMO Tag)

1 Image

Overview

Quantity:	100 µg
Target:	C1QA
Protein Characteristics:	AA 23-245
Origin:	Human
Source:	Escherichia coli (E. coli)
Protein Type:	Recombinant
Purification tag / Conjugate:	This C1QA protein is labelled with His-SUMO Tag.
Application:	SDS-PAGE (SDS)

Product Details

Sequence:	EDLCRAPDGK KGEAGRPGR GRPGLKGEQG EPGAPGIRTG IQGLKGDQGE PGPSGNPGKV GYPGSPGPLG ARGIPGIKGT KGSPGNIKDQ PRPAFSAIRR NPPMGGNVVI FDTVITNQEE PYQNHSGRFV CTVPGYFFFT FQVLSQWEIC LSIVSSSRGQ VRRSLGFCDT TNKGLFQVVS GGMVLQLQQG DQVWVEKDPK KGHYQGSEA DSVFSGFLIF PSA
Purification:	SDS-PAGE
Purity:	> 90 %

Target Details

Target:	C1QA
Alternative Name:	C1QA (C1QA Products)
Background:	C1q associates with the proenzymes C1r and C1s to yield C1, the first component of the serum

Target Details

complement syst. The collagen-like regions of C1q interact with the Ca²⁺-dependent C1r2C1s2 proenzyme complex, and efficient activation of C1 takes place on interaction of the globular heads of C1q with the Fc regions of IgG or IgM antibody present in immune complexes.

Molecular Weight: 39.7 kDa

UniProt: [P02745](#)

Pathways: [Complement System](#)

Application Details

Application Notes: Optimal working dilution should be determined by the investigator.

Restrictions: For Research Use only

Handling

Format: Liquid

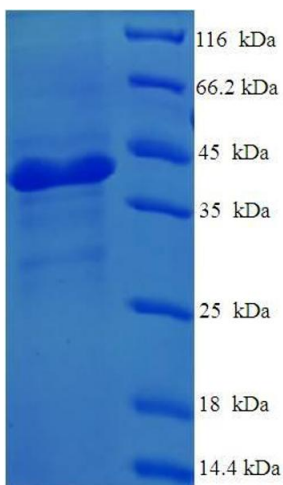
Concentration: 0.1-2 mg/mL

Buffer: 20 mM Tris-HCl based buffer, pH 8.0

Storage: -80 °C, 4 °C, -20 °C

Storage Comment: Store at -20°C, for extended storage, conserve at -20°C or -80°C. Repeated freezing and thawing is not recommended. Store working aliquots at 4°C for up to one week.

Images



SDS-PAGE

Image 1.