

Datasheet for ABIN5709213

CCL16 Protein (AA 24-120) (His-SUMO Tag)[Go to Product page](#)**1** Image

Overview

Quantity:	100 µg
Target:	CCL16
Protein Characteristics:	AA 24-120
Origin:	Human
Source:	Escherichia coli (E. coli)
Protein Type:	Recombinant
Purification tag / Conjugate:	This CCL16 protein is labelled with His-SUMO Tag.
Application:	SDS-PAGE (SDS)

Product Details

Sequence:	QPKVPEWVNT PSTCCLKYYE KVLPRRLVVG YRKALNCHLP AIIFVTKRNR EVCTNPNDWW VQEYIKDPNL PLLPTRNLST VKIITAKNGQ PQLLNSQ
Purification:	SDS-PAGE
Purity:	> 90 %

Target Details

Target:	CCL16
Alternative Name:	CCL16 (CCL16 Products)
Background:	Shows chotactic activity for lymphocytes and monocytes but not neutrophils. Also shows potent myelosuppressive activity, suppresses proliferation of myeloid progenitor cells. Recombinant SCYA16 shows chotactic activity for monocytes and THP-1 monocytes, but not

Target Details

	for resting lymphocytes and neutrophils. Induces a calcium flux in THP-1 cells that were desensitized by prior expression to RANTES.
Molecular Weight:	27.2 kDa
UniProt:	O15467

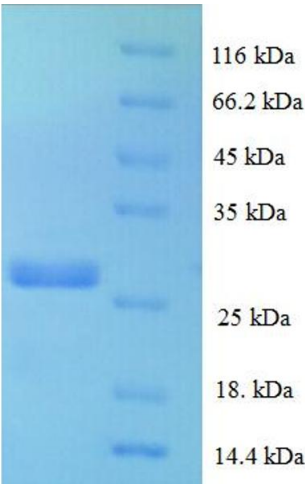
Application Details

Application Notes:	Optimal working dilution should be determined by the investigator.
Restrictions:	For Research Use only

Handling

Format:	Liquid
Concentration:	0.1-2 mg/mL
Buffer:	20 mM Tris-HCl based buffer, pH 8.0
Storage:	-80 °C, 4 °C, -20 °C
Storage Comment:	Store at -20°C, for extended storage, conserve at -20°C or -80°C. Repeated freezing and thawing is not recommended. Store working aliquots at 4°C for up to one week.

Images



SDS-PAGE

Image 1.