

Datasheet for ABIN5709217

CCL21 Protein (AA 24-134) (GST tag)



[Go to Product page](#)

1 Image

Overview

Quantity:	100 µg
Target:	CCL21
Protein Characteristics:	AA 24-134
Origin:	Human
Source:	Escherichia coli (E. coli)
Protein Type:	Recombinant
Purification tag / Conjugate:	This CCL21 protein is labelled with GST tag.
Application:	SDS-PAGE (SDS)

Product Details

Sequence:	SDGGAQDCCL KYSQRKIPAK VRSYRKQEP SLGCSIPAIL FLPRKRSQAE LCADPKELWW QQLMQHLDKT PSPQKPAQGC RKDRGASKTG KKGKGSKGCK RTERSQTPKG P
Purification:	SDS-PAGE
Purity:	> 90 %

Target Details

Target:	CCL21
Alternative Name:	CCL21 (CCL21 Products)
Background:	Inhibits hopoiesis and stimulates chotaxis. Chotactic in vitro for thymocytes and activated T-cells, but not for B-cells, macrophages, or neutrophils. Shows preferential activity towards naive T-cells. May play a role in mediating homing of lymphocytes to secondary lymphoid organs.

Target Details

Binds to atypical chokine receptor ACKR4 and mediates the recruitment of beta-arrestin (ARRB1/2) to ACKR4.

Molecular Weight: 39.6 kDa

UniProt: [O00585](#)

Pathways: [Regulation of Actin Filament Polymerization](#)

Application Details

Application Notes: Optimal working dilution should be determined by the investigator.

Restrictions: For Research Use only

Handling

Format: Liquid

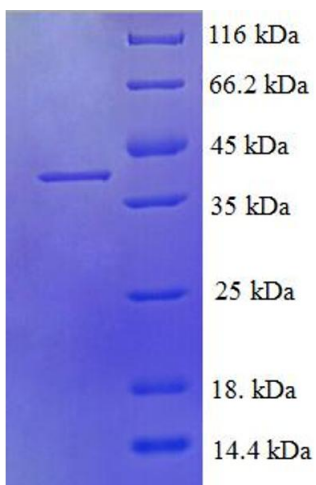
Concentration: 0.1-2 mg/mL

Buffer: 20 mM Tris-HCl based buffer, pH 8.0

Storage: -80 °C, 4 °C, -20 °C

Storage Comment: Store at -20°C, for extended storage, conserve at -20°C or -80°C. Repeated freezing and thawing is not recommended. Store working aliquots at 4°C for up to one week.

Images



SDS-PAGE

Image 1.