

Datasheet for ABIN570923

anti-TREM2 antibody (Internal Region)**3** Images[Go to Product page](#)

Overview

Quantity:	100 µg
Target:	TREM2
Binding Specificity:	Internal Region
Reactivity:	Mouse
Host:	Goat
Clonality:	Polyclonal
Conjugate:	This TREM2 antibody is un-conjugated
Application:	ELISA, Immunofluorescence (IF)

Product Details

Purpose:	Trem2 (mouse)
Immunogen:	Peptide with sequence C-QVEHSTSRNQET, from the internal region of the protein sequence according to NP_112544.1.
Sequence:	QVEHSTSRNQ ET
Isotype:	IgG
Cross-Reactivity:	Mouse
Purification:	Purified from goat serum by ammonium sulphate precipitation followed by antigen affinity chromatography using the immunizing peptide.
Grade:	Verified

Target Details

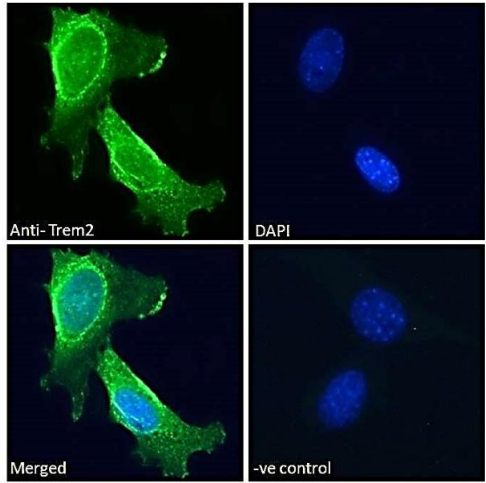
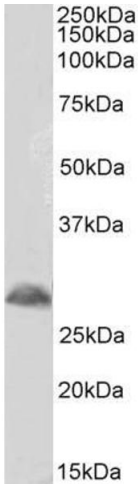
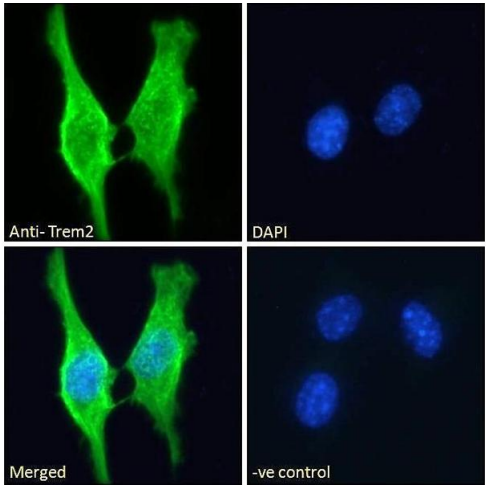
Target:	TREM2
Alternative Name:	Trem2 (TREM2 Products)
Background:	Trem2, triggering receptor expressed on myeloid cells 2 , Trem2a, Trem2b, Trem2c , triggering receptor expressed on myeloid cells 2a, triggering receptor expressed on myeloid cells 2b, triggering receptor expressed on myeloid cells 2c
Gene ID:	83433, 301227
NCBI Accession:	NP_112544

Application Details

Application Notes:	Western Blot: Preliminary experiments showed a band at approx 26 kDa in Mouse Adrenal gland lysates after 1 µg/mL antibody staining (calculated MW of 24.5 kDa according to Mouse NP_112544.1 and 24.9 according to Rat NP_001100354.1). Primary incubation 1 ho Peptide ELISA: antibody detection limit dilution 1:32000.
Comment:	Immunofluorescence: Strong expression of the protein seen in the Plasma Membrane of NIH3T3-L1 (adipocyte like) cells. Recommended concentration: 10µg/ml.
Restrictions:	For Research Use only

Handling

Format:	Liquid
Concentration:	0.5 mg/mL
Buffer:	Supplied at 0.5 mg/mL in Tris saline, 0.02 % sodium azide, pH 7.3 with 0.5 % bovine serum albumin.
Preservative:	Sodium azide
Precaution of Use:	This product contains Sodium azide: a POISONOUS AND HAZARDOUS SUBSTANCE which should be handled by trained staff only.
Handling Advice:	Minimize freezing and thawing.
Storage:	-20 °C
Storage Comment:	Aliquot and store at -20°C, with minimal freeze/thawing. A working aliquot may be refrigerated at 4°C for a few weeks and still remain viable.



Immunofluorescence

Image 1. ABIN570923 Immunofluorescence analysis of paraformaldehyde fixed 3T3-L1 cells, permeabilized with 0.15% Triton. Primary incubation 1hr (10ug/ml) followed by Alexa Fluor 488 secondary antibody (2ug/ml), showing membrane/cytoplasmic staining. The nuclear stain is DAPI (blue). Negative control: Unimmunized goat IgG (10ug/ml) followed by Alexa Fluor 488 secondary antibody (2ug/ml).

Western Blotting

Image 2. Antibody (1µg/ml) staining of Mouse Spinal Cord lysate (35µg protein in RIPA buffer). Primary incubation was 1 hour. Detected by chemiluminescence.

Western Blotting

Image 3. ABIN570923 Immunofluorescence analysis of paraformaldehyde fixed 3T3-L1 cells, permeabilized with 0.15% Triton. Primary incubation 1hr (10ug/ml) followed by Alexa Fluor 488 secondary antibody (2ug/ml), showing membrane staining. The nuclear stain is DAPI (bl